

ISOMETRIC VIEW
SCALE 1:200

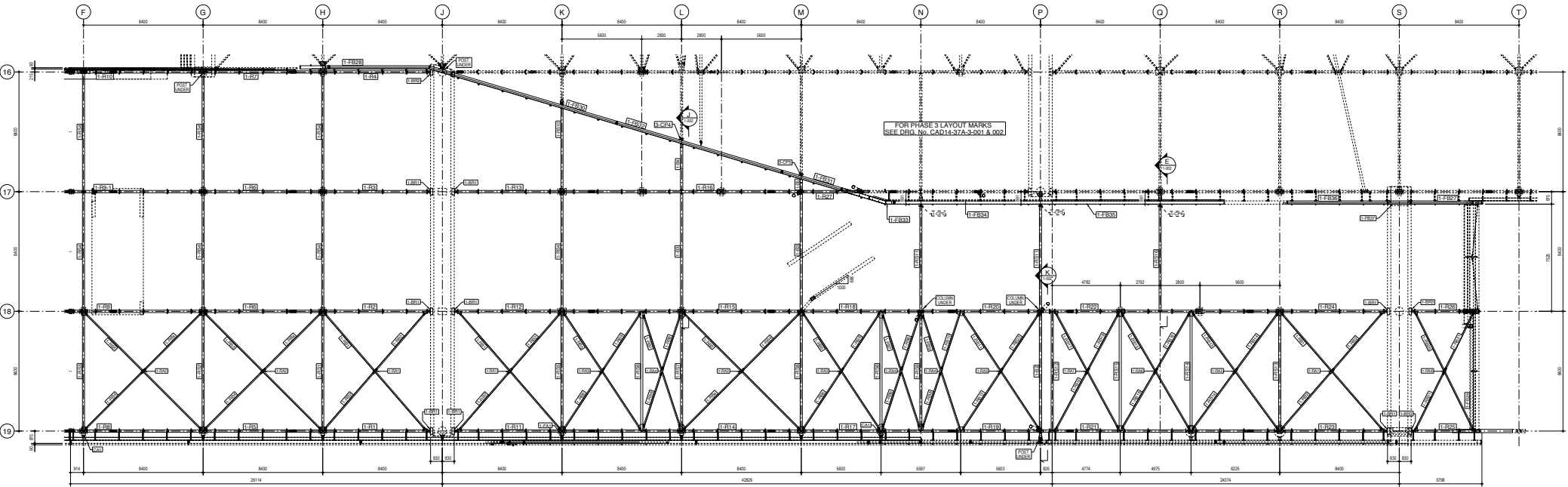
REV	DESCRIPTION	STATUS	BY	DATE	REF. DES. No.	DESCRIPTION
1	ISSUED FOR PERMIT	RC	REF	17.06.2016		
2	ISSUED FOR CONSTRUCTION	RC	REF	17.06.2016		

GENERAL NOTES (G.O.N)
 1. THIS DRAWING IS TO BE READ IN CONJUNCTION WITH RELEVANT ASSUMPTIONS, SPECIFICATIONS, SCHEDULES, AND DRAWINGS.
 2. DIMENSIONS - MILLIMETRES UNLESS OTHERWISE SPECIFIED.
 3. HOLES - 50% FOR 1000 SQ. M.M BOLTS UNLESS OTHERWISE SPECIFIED.
 4. BRISBANE - CORNER NUMBER FROM BMB.
 5. MATERIALS - GRADE 550SR UNLESS OTHERWISE SPECIFIED.
 6. FINISHES - REFER ENGINEERS SPECIFICATION.

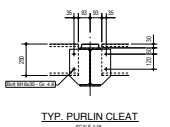
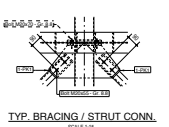
CADCON
 STEEL CONSTRUCTION AND ENGINEERING
 1107 Cogan Street
 Lyttelton, Ext. 6
 Phone: 012 664 8134
 Fax: 012 664 8156

mondocane
 1107 Cogan Street
 Lyttelton, Ext. 6
 Phone: 012 664 8134
 Fax: 012 664 8156

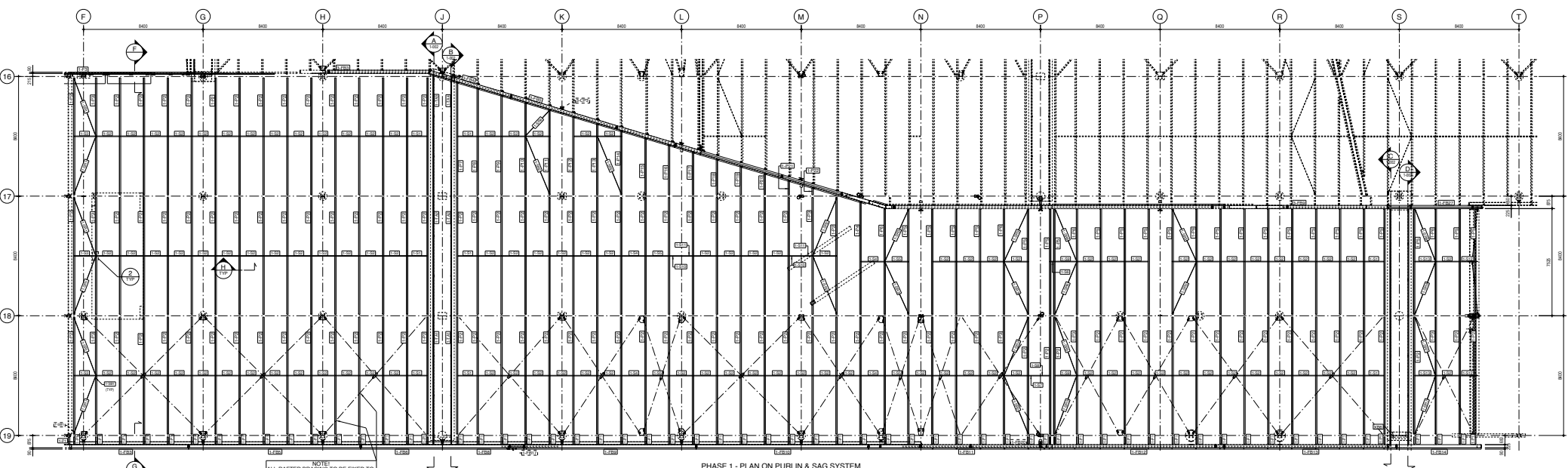
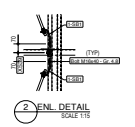
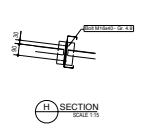
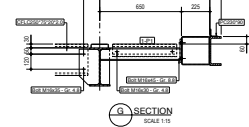
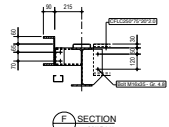
STATS SA	
RC	
17.06.2016	
1:200	RC
AD	CAD14-37B-001
	0



PHASE 1 - PLAN ON ROOF
SCALE 1:100



NOTE!
FOR SECTION VIEWS A TO E &
DETAIL 1, SEE DRG. NO. CAD14-37B-1-002



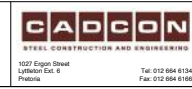
PHASE 1 - PLAN ON PURLIN & SAG SYSTEM
SCALE 1:100

NOTE!
ALL RAFTER BRACING TO BE FIXED TO
PURLINS USING 8mm NUT&BOLTS AT
BRACING / PURLIN INTERSECTIONS.
(TYPICAL)

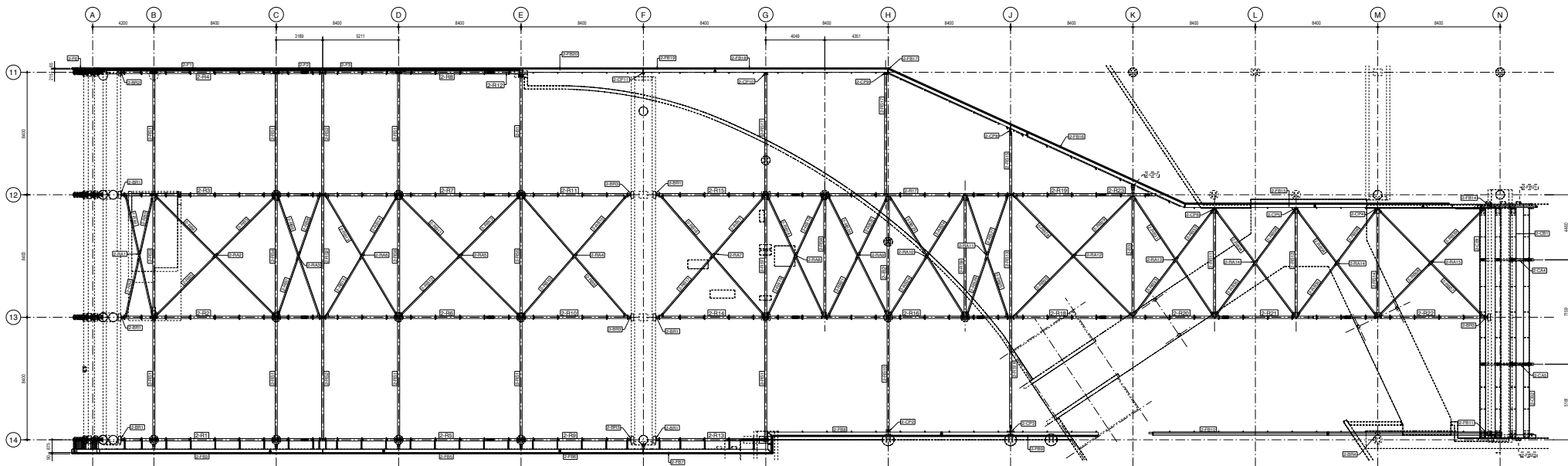
REV	DESCRIPTION	DATE	BY	CHKD	REF. DRG. NO.	DESCRIPTION
1	ISSUED FOR PERMIT	14.02.2015	RC	RC		
2	ISSUED FOR FABRICATION	23.02.2015	RC	RC		

GENERAL NOTES (U.O.N.)

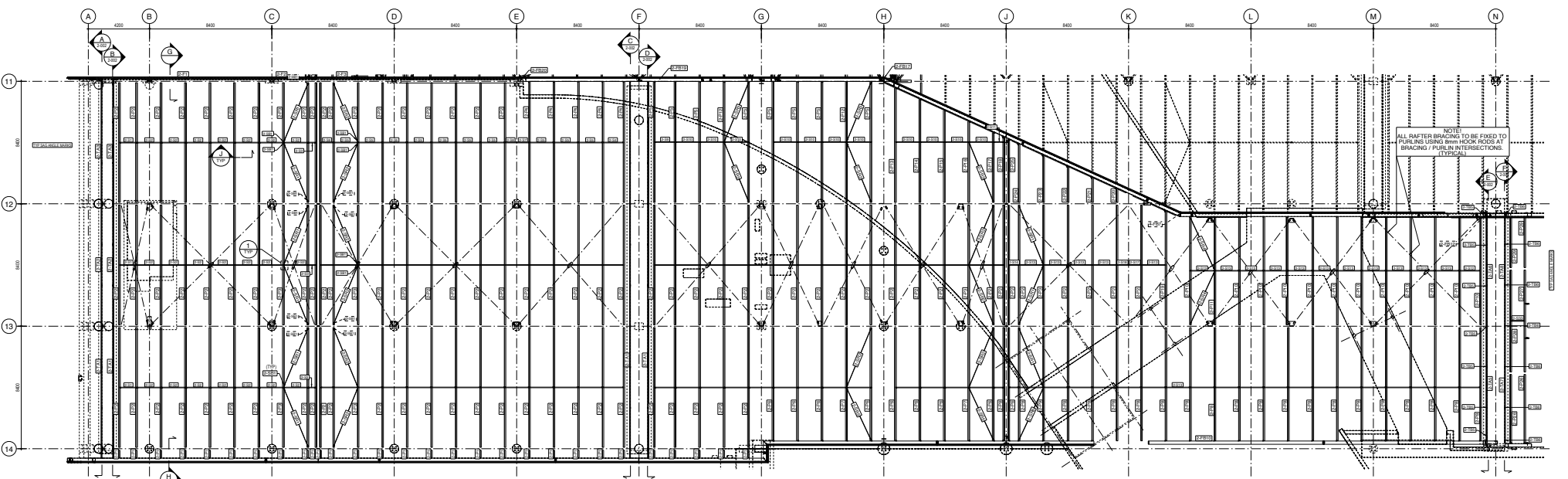
- THIS DRAWING TO BE READ IN CONJUNCTION WITH RELEVANT ASSUMPTIONS, SPECIFICATIONS, SCHEDULES, etc.
- ALL DIMENSIONS ARE IN METERS UNLESS OTHERWISE SPECIFIED.
- ALL HOLES ARE TO BE DRILLED TO THE SPECIFIED SIZE UNLESS OTHERWISE SPECIFIED.
- ALL MATERIALS TO BE SUPPLIED TO THE WORKFACE BY THE CONTRACTOR.
- ALL MATERIALS TO BE SUPPLIED TO THE WORKFACE BY THE CONTRACTOR.
- ALL MATERIALS TO BE SUPPLIED TO THE WORKFACE BY THE CONTRACTOR.
- ALL MATERIALS TO BE SUPPLIED TO THE WORKFACE BY THE CONTRACTOR.
- ALL MATERIALS TO BE SUPPLIED TO THE WORKFACE BY THE CONTRACTOR.
- ALL MATERIALS TO BE SUPPLIED TO THE WORKFACE BY THE CONTRACTOR.
- ALL MATERIALS TO BE SUPPLIED TO THE WORKFACE BY THE CONTRACTOR.



STATS SA	
MAN BUILDING ARRANGEMENT	CAD14-37B-1-002
PHASE 1 - ROOF PLAN	1:100
REF:	REF
REF:	CAD14-37B-1-001



PHASE 2 - PLAN ON ROOF
SCALE 1:100



PHASE 2 - PLAN ON PURLIN & SAG SYSTEM
SCALE 1:100

NOTE:
ALL RAFTER BRACINGS TO BE FIXED TO PURLIN USING BRIM HOOK ROADS AT BRACING / PURLIN INTERSECTIONS. (TYPICAL)

REV	DESCRIPTION	DATE	BY	CHK	REF. DES. NO.	DESCRIPTION
1	ISSUED FOR PERMIT	20.08.2015	SA	SA		
2	ISSUED FOR CONSTRUCTION	21.02.2016	SA	SA		

GENERAL NOTES (U.O.N.)

- THIS DRAWING IS TO BE READ IN CONJUNCTION WITH RELEVANT ASSOCIATED SPECIFICATIONS.
- ALL DIMENSIONS ARE IN METRES UNLESS OTHERWISE SPECIFIED.
- ALL BOLTS SHALL BE TO AS 4798.
- ALL WELDS SHALL BE TO AS 1554.
- ALL MATERIALS SHALL BE TO AS 1554.
- ALL CONNECTIONS SHALL BE TO AS 1554.
- ALL PAINTING SHALL BE TO REFER ENGINEERS SPECIFICATION.

CADCON
STEEL CONSTRUCTION AND ENGINEERING

1107 Cogan Street
Lynnton, Vic 3
Melbourne

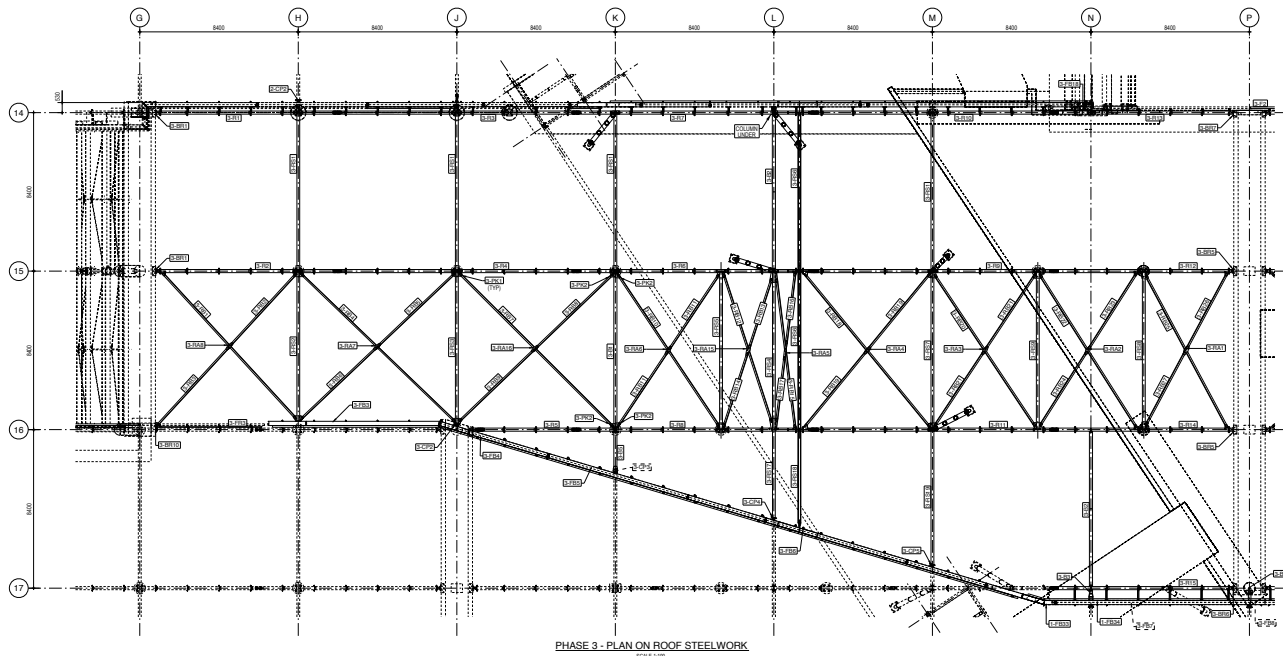
Tel: 012 864 8134
T: +61 71 850 3447 | F: +61 71 850 3594

mondo cane
STEEL CONSTRUCTION AND ENGINEERING

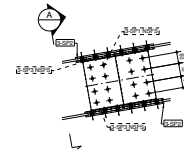
1107 Cogan Street
Lynnton, Vic 3
Melbourne

Tel: 012 864 8134
T: +61 71 850 3447 | F: +61 71 850 3594

STATS SA	
RC	CAD14-37B-1-002
DATE	20.08.2015
SCALE	1:100
REF	REF
AO	CAD14-37B-2-001

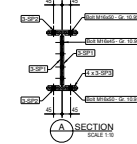


PHASE 3 - PLAN ON ROOF STEELWORK
SCALE 1:10

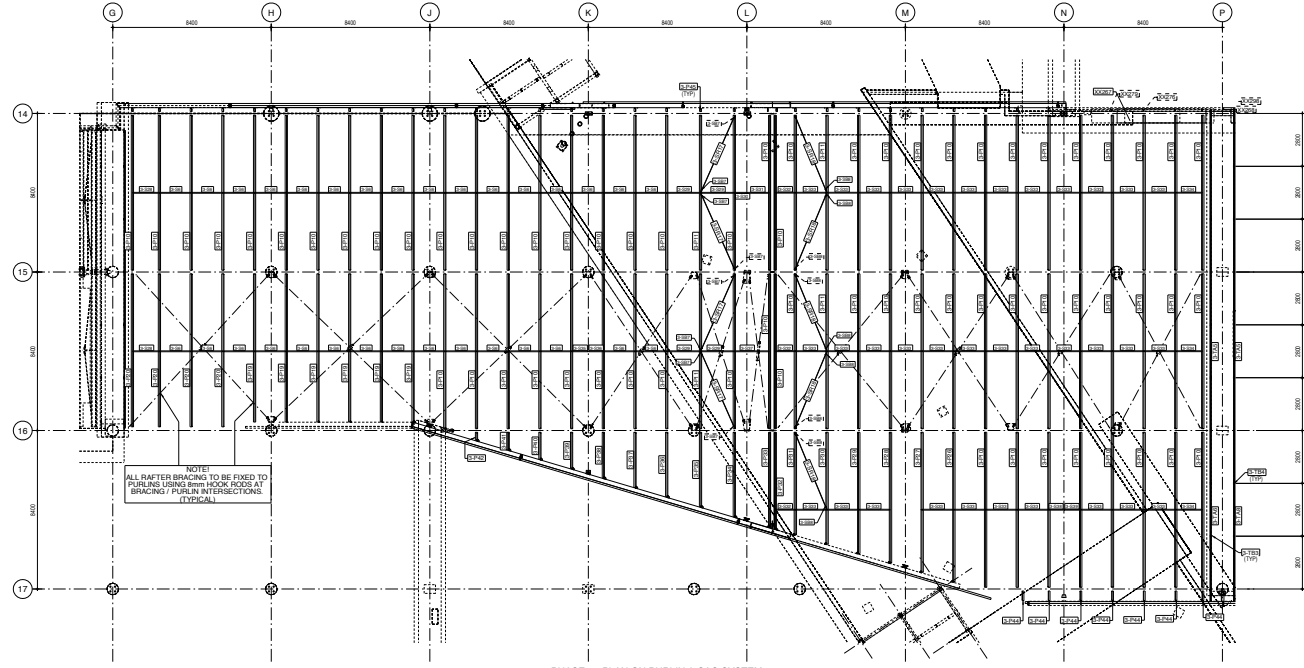


TYPICAL RAFTER SPLICE DETAIL
SCALE 1:10

NOTE:
WHERE Q1 - 10.9S HSBFG BOLTS ARE SPECIFIED, THE FOLLOWING SHALL APPLY:
1. CONTACT SURFACES SHALL BE FREE FROM GREASE, RUST, PAINT AND TO BE CLEANED WITH WIRE BRUSH PRIOR TO ASSEMBLY.
2. TIGHTENING TO BE DONE IN ACCORDANCE WITH SANS 004 CLAUSE 5.3.1 FOR FRICTION GRIP JOINTS TO CORRECT LOAD INDICATING WARNERS TO BE PROVIDED FOR ALL HSBFG BOLTS.

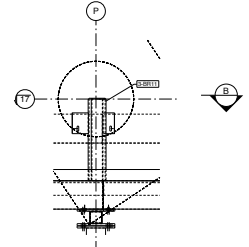


SECTION A
SCALE 1:5

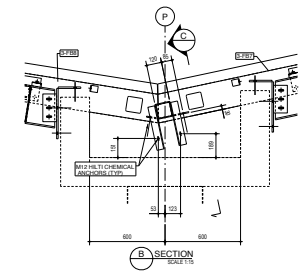


PHASE 3 - PLAN ON PURLIN & SAG SYSTEM
SCALE 1:10

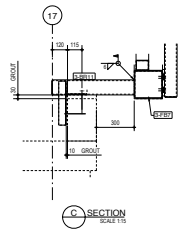
NOTE!
ALL RAFTER BRACING TO BE FIXED TO PURLIN USING BENTY HOOK PINS AT BRACING / PURLIN INTERSECTIONS. (TYPICAL)



BRACKET FIXING DETAIL
SCALE 1:5



SECTION B
SCALE 1:5



SECTION C
SCALE 1:5

NOTE!
SECTION VIEWS & ENLARGED DETAILS ARE SIMILAR TO DRG. NO. CAD14-37B-1-001 TO 3 U.C.N.

REV	DESCRIPTION	STATUS	BY	DATE	REF. DRG. NO.	DESCRIPTION
1	ISSUED FOR PERMIT	REC	JA	11/20/2015		
2	MAJOR UPDATES	REC	JA	22/02/2016		
3	GRADED FOR FABRICATION	REC	JA	11/02/2016		

GENERAL NOTES (U.O.N)
1. THIS DRAWING TO BE READ IN CONJUNCTION WITH RELEVANT ASSUMPTIONS, SPECIFICATIONS, DRAWINGS, AND DETAILS.
2. DIMENSIONS - MILLIMETERS UNLESS OTHERWISE SPECIFIED.
3. HOLES - 50% FOR 100% OF ALL BOLTS (SEE TABLE 1.1)
4. MATERIALS - GRADE S355JR
5. WELDING - CONFORM TO EN 1090-1
6. FINISHING - REFER ENGINEERS SPECIFICATION

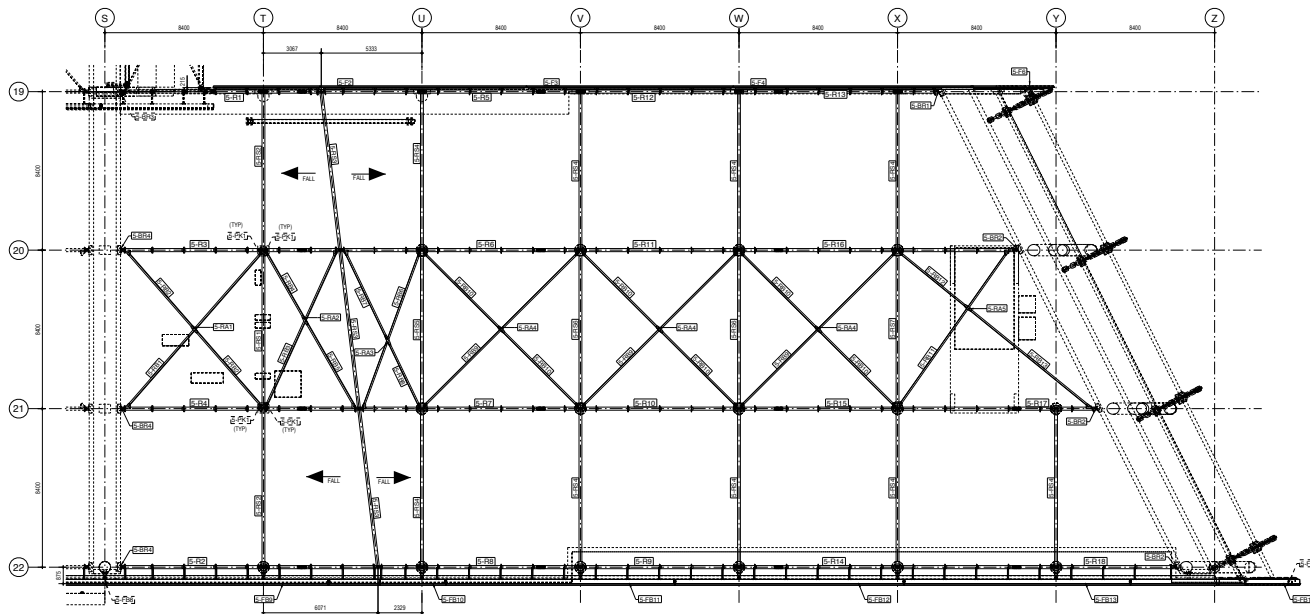


1107 Egan Drive
Lyttelton Ext. 6
P.O. Box 100
Tel: 012 664 6134
Fax: 012 664 6166

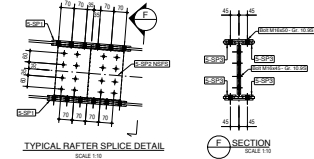


1107 Egan Drive
Lyttelton Ext. 6
P.O. Box 100
Tel: 012 664 6134
Fax: 012 664 6166

STATS SA	
RC	CAD14-37B-1-002
DATE	09/10/2015
SCALE	1:10 1:15 1:100
PROJECT	REF: 13053 S-SS-P01
NO.	CAD14-37B-S-001

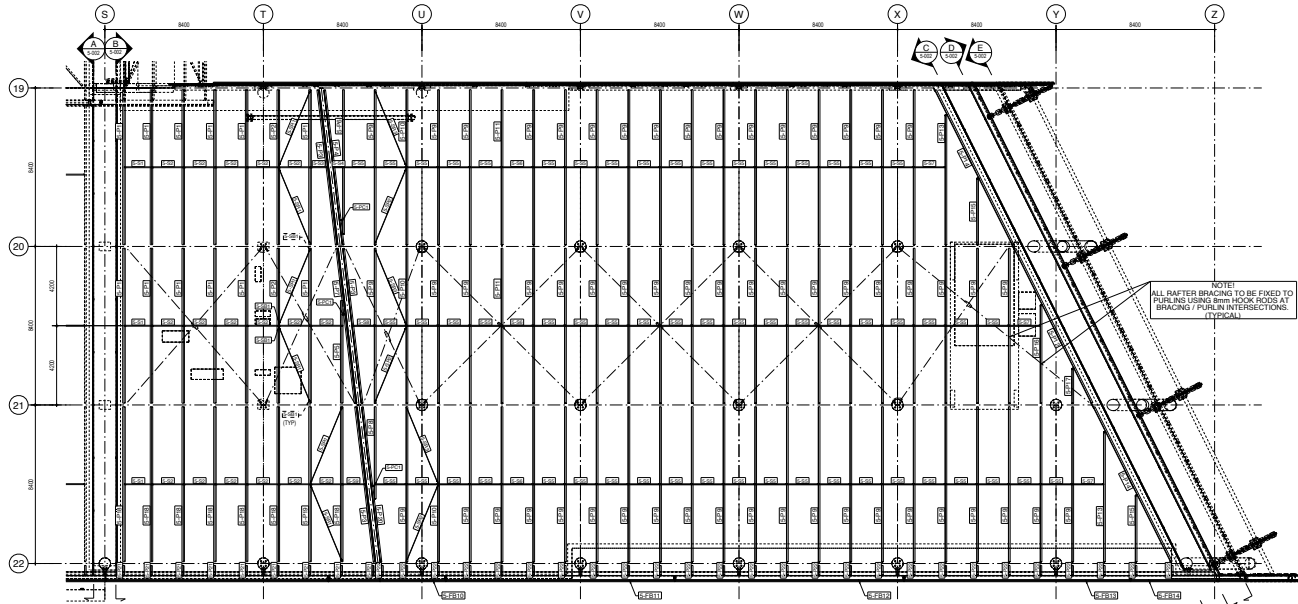


PHASE 5 - PLAN ON ROOF STEELWORK
SCALE 1:100



TYPICAL RAFTER SPLICE DETAIL
SCALE 1:10

NOTE:
WHERE 01: 10.9S HSFG BOLTS ARE SPECIFIED, THE FOLLOWING SHALL APPLY:
1. CONTACT SURFACES SHALL BE FREE FROM GREASE, RUST, PAINT
&c. & TO BE CLEANED WITH WIRE BRUSH PRIOR TO ASSEMBLY.
2. TO BE OILED TO BE DONE IN ACCORDANCE WITH SAND 044 CLAUSE 5.3.1
FOR FRICTION HSFG BOLTS & CORROSION RESISTANT WASHERS
TO BE PROVIDED FOR ALL HSFG BOLTS.



PHASE 5 - PLAN ON PURLIN & SAG SYSTEM
SCALE 1:100

NOTE:
ALL RAFTER BRACING TO BE FIXED TO
PURLIN USING 8mm HOOK BOLTS AT
BRACING / PURLIN INTERSECTIONS.
(TYPICAL)

NOTE:
SECTION VIEWS & ENLARGED DETAILS,
ARE SIMILAR TO DRG. No. CAD14-37B-1-001 TO 3
U.O.N.

REV	DESCRIPTION	STATUS	BY	DATE	REF. DRG. No.	DESCRIPTION
1	ISSUED FOR PERMIT	REV	REF	23.02.2015		
2	ISSUED FOR FABRICATION	REV	REF	23.02.2015		

GENERAL NOTES (U.O.N.)

- THIS DRAWING TO BE READ IN CONJUNCTION WITH RELEVANT ASSUMPTIONS, SPECIFICATIONS, & CONDITIONS.
- DIMENSIONS - MILLIMETRES UNLESS OTHERWISE STATED.
- BOLTS - ISO FOR ISO 8800 G8.8 BOLTS.
- WELDES - SHW 1547 CODE.
- MATERIALS - GRADE SS400.
- NOTICES - CORRECT NUMBER FROM 0000.
- PAINTING - REFER ENGINEERS SPECIFICATION.

NO.	DESCRIPTION	DATE	BY	CHKD.

CADCON
STEEL CONSTRUCTION AND ENGINEERING

1107 Cogan Drive
Lyttelton Ext. 6
P.O. Box 101
Phone: 03 752 8644
Fax: 03 752 8646

mondo cane

1107 Cogan Drive
Lyttelton Ext. 6
P.O. Box 101
Phone: 03 752 8644
Fax: 03 752 8646

STATS SA	
RC	CAD14-37B-1-002
DATE	20.08.2015
SCALE	1:100
REF	REF
NO.	CAD14-37B-5-001

REF: 13053 S-SS-P01