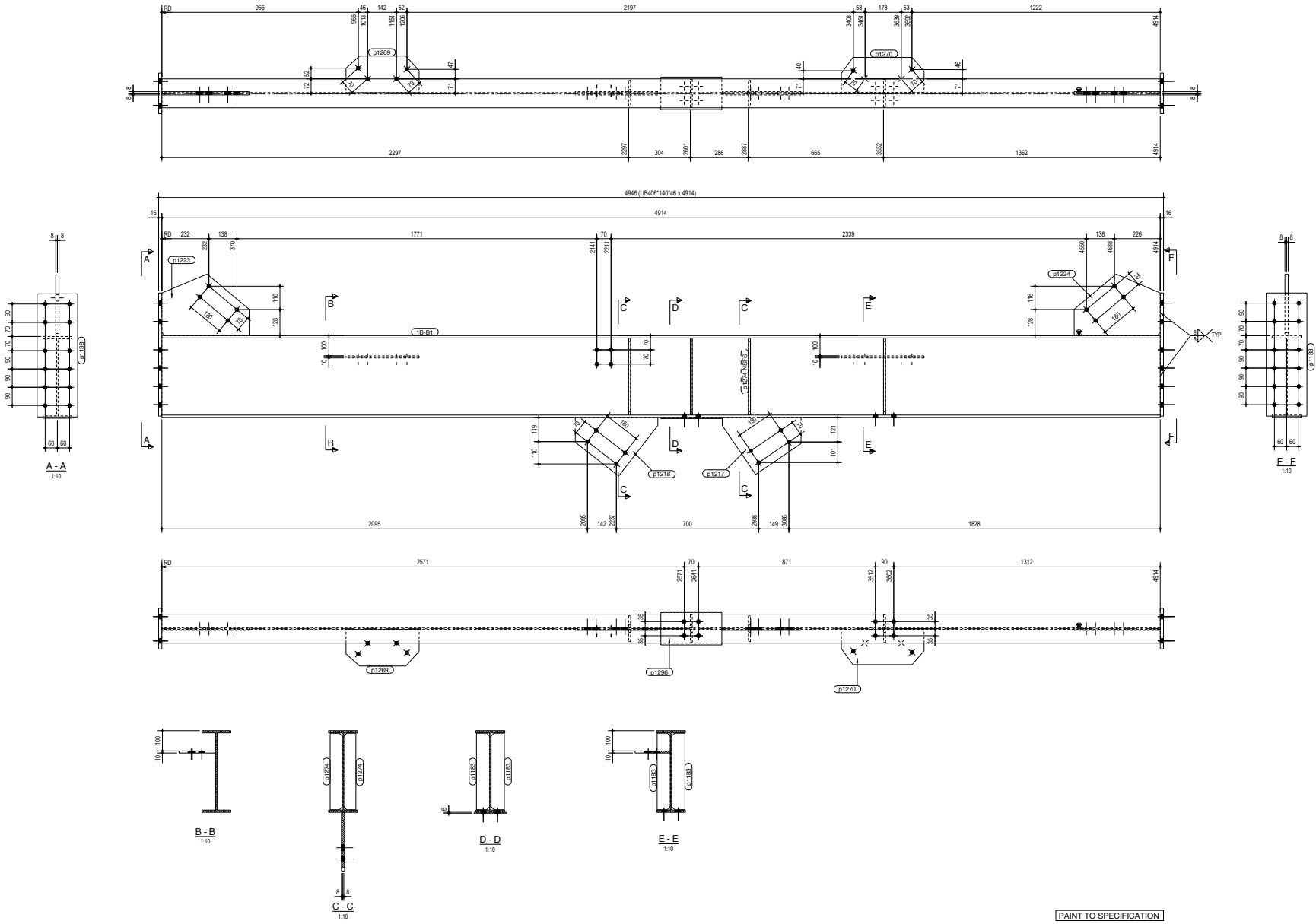


PHASE NO.	QTY
Phase 1	1
Phase 2	1

MATERIAL LIST FOR ONE ASSEMBLY MK'D S137-1B-B1					
Item	No	Section	Length	Grade	Weight (T)
SB-B1	1	LB406*140*46	4914	S355JR	0.226
p1138	2	PL10*200	408	S355JR	0.030
p1181	4	PL10*200	377	S355JR	0.068
p1217	1	PL10*201.3	388	S355JR	0.009
p1218	1	PL10*208.8	406	S355JR	0.010
p1223	1	PL10*203.2	430	S355JR	0.013
p1224	1	PL10*203.2	424	S355JR	0.013
p1269	1	PL10*180.4	380	S355JR	0.005
p1270	1	PL10*171.6	401	S355JR	0.005
p1274	4	PL10*200	377	S355JR	0.007
p1296	1	PL6*160	300	S355JR	0.002
<b>TOTAL ASSEMBLY</b>					<b>0.327</b>



**PAINT TO SPECIFICATION**

**ONE - BEAM REQ'D AS DRAWN MK'D S137-1B-B1**

**COLOUR CODE: YELLOW**

REV	DESCRIPTION	STATUS	BY	DATE
0	ISSUED FOR APPROVAL	RPC	RC	21.06.2017
1	ISSUED FOR FABRICATION	RPC	RC	21.06.2017

**FINISH :** 1 0 2 HOT DIP GALVANIZED TO EN ISO 1461  
 1 1 1 PAINT TO SPECIFICATION

**GENERAL NOTES (I.D.M)**

1. HOLES - 200 FOR 1600 S, 8.8 BOLTS
2. WELDS - 6mm FILET CONT.
3. MATERIAL - GRADE S355JR
4. NOTCHES - IN ACCORDANCE WITH SANS 1431
5. PAINTING - REFER ENGINEER'S SPECIFICATION

**VAN STADEN ENGINEERING**  
 8 Midstate Rd, Veldoria, Edson Tel: 011 813 1304 Fax: 011 837 3144

Project: **MACH ENERGY - MT. PLEASANT PROJECT**

Drawn: **DMS-01 CIRCUIT ASSEMBLY - BEAM**

Checked: **MC**

Date: **21.06.2017**

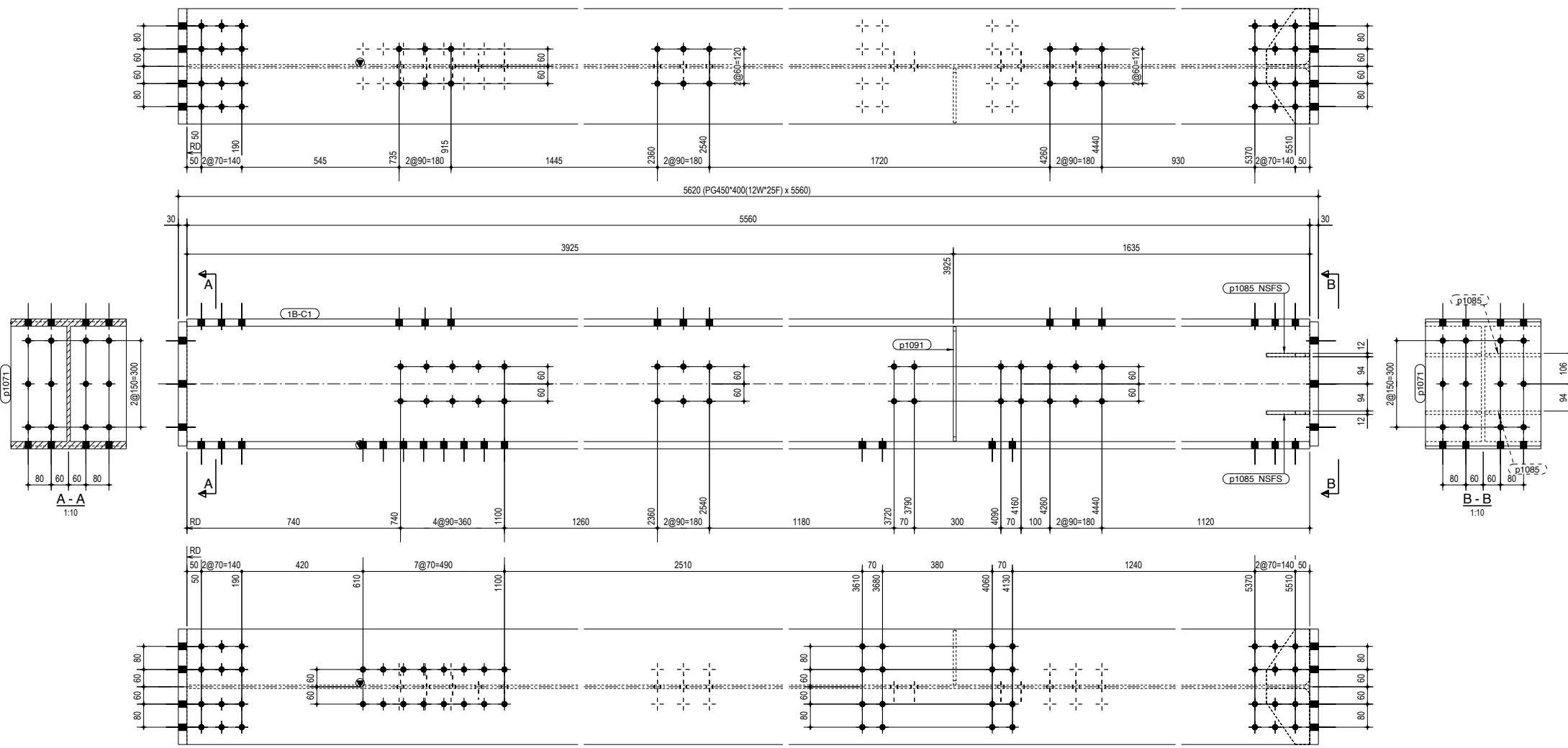
Scale: **1:10**

Design Ref: **CDJV-ME16009-CP1221-S-3330-00137**

mundo cane	
© 1988-2017 mundo cane.co.za t: +27 21 852-2447   f: +27 21 852-2669 www.mundocane.co.za	Rev: <b>0</b>

PHASE No.	QTY
Phase 1	1
LOT No.	QTY
2   Module 1B	1
GRID LOCATION	
1	10F

MATERIAL LIST FOR ONE ASSEMBLY MK'D S137-1B-C1					
Mark	No	Section	Length	Grade	Weight (T)
1B-C1	1	PG450*400(12W*25F)	5560	S355JR	1.088
p1071	2	PL30*400	430	S355JR	0.081
p1085	4	FL12*150	194	S355JR	0.008
p1091	1	PL10*190	397	S355JR	0.006
<b>TOTAL 1 ASSEMBLY</b>					<b>1.183</b>



**NOTE:**  
ENSURE ALL CUTS AS WELL AS  
BASE & CAP PLATES ARE SQUARE  
TO THE AXIS OF THE PROFILE

**PAINT TO SPECIFICATION**

**ONE - COLUMN REQ'D AS DRAWN MK'D S137-1B-C1**

**COLOUR CODE: YELLOW**

REV	DESCRIPTION	STATUS	BY	DATE
A	ISSUED FOR APPROVAL	RFC	RC	21.06.2017
0	ISSUED FOR FABRICATION	RFC	RC	21.06.2017

**FINISH : 1** G = HOT DIP GALVANIZE TO EN ISO 1461  
1 = PAINT TO SPECIFICATION

**GENERAL NOTES (U.O.N)**

- HOLES - 220 FOR M20 Gr. 8.8 BOLTS
- WELDS - 8mm FILET CONT.
- MATERIAL - GRADE S355JR IN ACCORDANCE WITH SANS 1431
- NOTCHES - CORNER RADIUS 11mm (MIN)
- PAINING - REFER ENGINEERS SPECIFICATION

**VAN STADEN ENGINEERING**  
8 Molecule Rd., Vulcania, Brakpan Tel: 011 813 1304 Fax: 011 817 3144

Client: **MACH ENERGY - MT. PLEASANT PROJECT**

Title: **DMS-01 CIRCUIT ASSEMBLY - COLUMN**

DESIGN REF: CDJV-ME16009-CP1221-S-3330-00137

e: info@mondocane.co.za t: +27 21 852-2447 f: +27 21 852-2699 www.mondocane.co.za		<b>mondo cane</b>	
Modelled: MC	Checked:	Rev: 0	
Date: 21.06.2017	Scale: 1:10	S137-1B-C1	

Tekla Structures