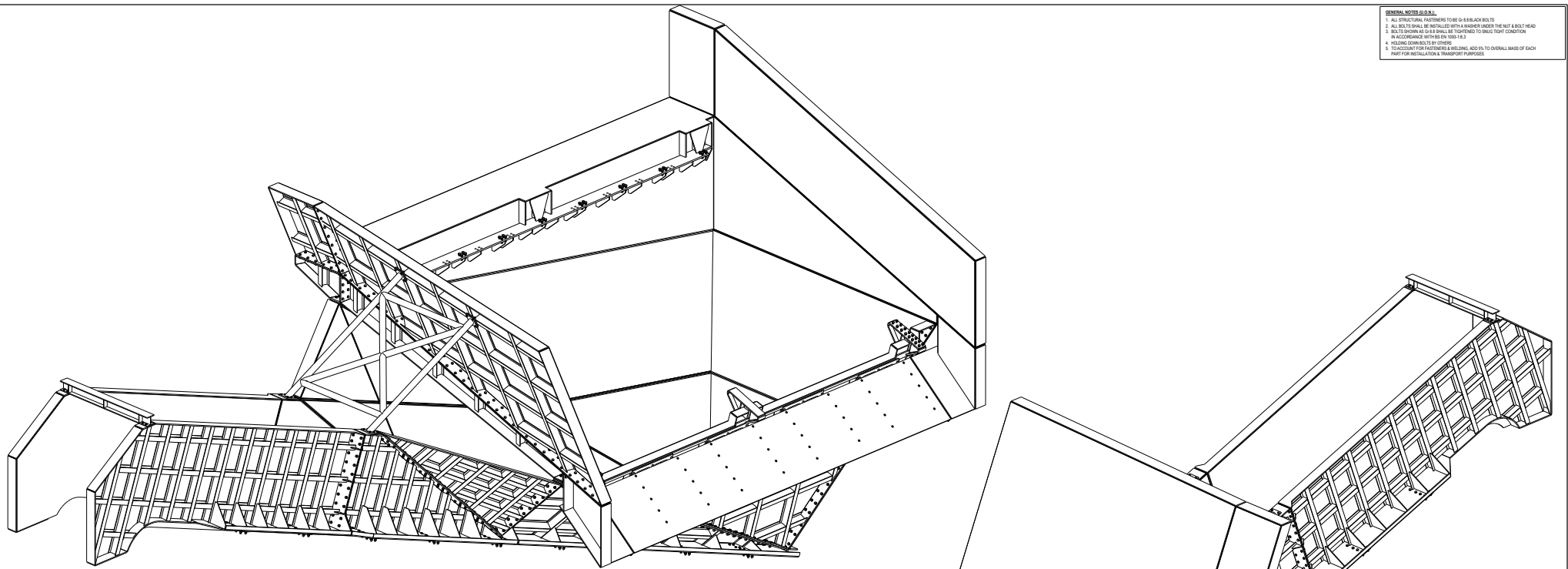
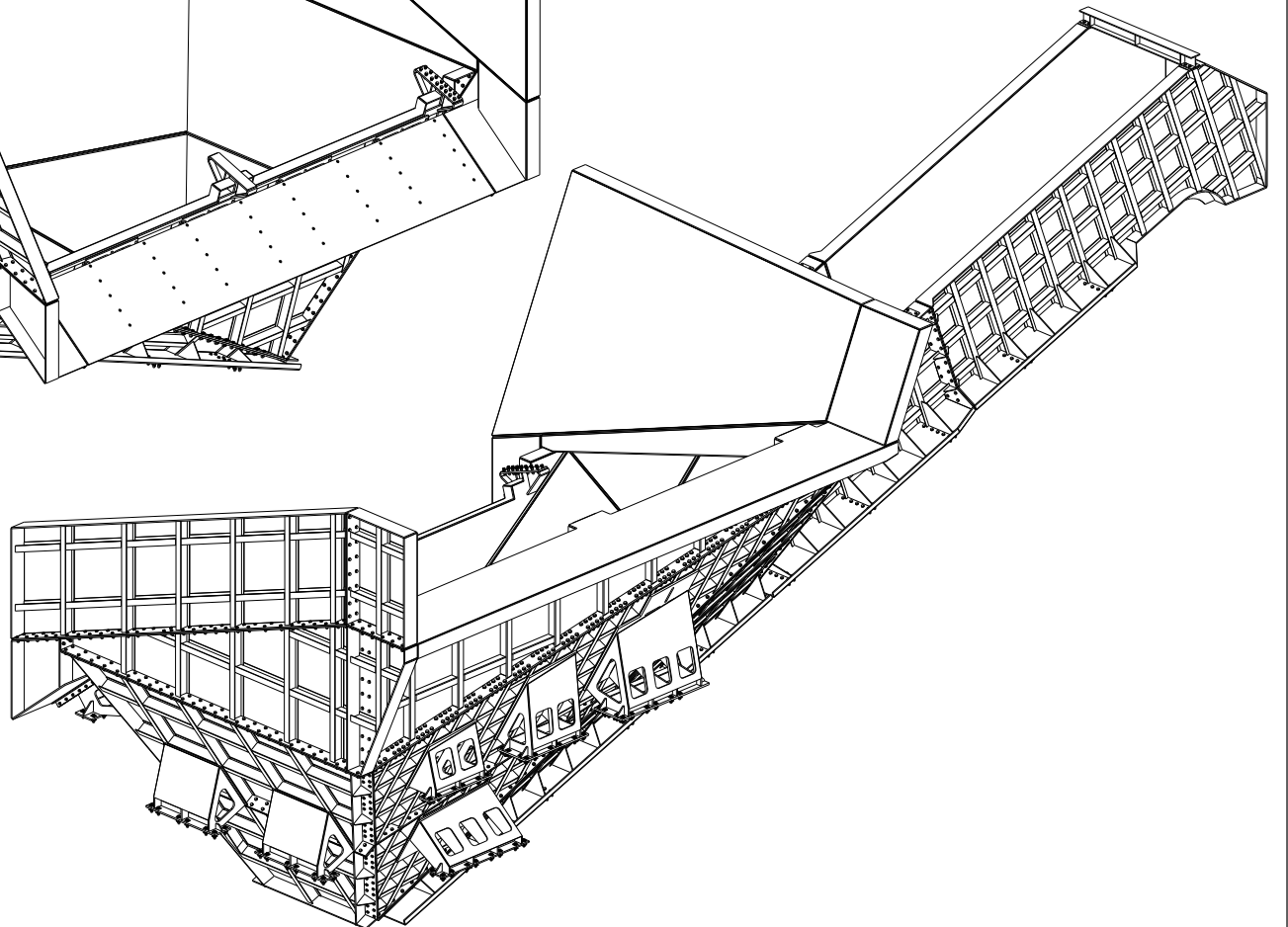


- GENERAL NOTES (I.O.N.)**
1. ALL STRUCTURAL FASTENERS TO BE G8 8 BLACK BOLTS
 2. ALL BOLTS SHALL BE INSTALLED WITH A WASHER UNDER THE NUT & BOLT HEAD
 3. BOLTS SHOWN G8 8 SHALL BE TIGHTENED TO SPEC'D TIGHT CONDITION IN ACCORDANCE WITH EN 1098 18.3
 4. NO COING DOWN IN THE CORNER
 5. TO ACCOUNT FOR FASTENERS & WELDING ADD 5% TO OVERALL MASS OF EACH PART FOR INSTALLATION & TRANSPORT PURPOSES



ISOMETRIC VIEW
SCALE 1:30



ISOMETRIC VIEW
SCALE 1:30

| REV | DESCRIPTION | STATUS | BY | DATE | REV. DRG. No. | DESCRIPTION |
|-----|------------------------|--------|----|------------|---------------|-------------|
| 1 | ISSUED FOR FABRICATION | RFC | BT | 23.01.2019 | | |
| | | | | | | |
| | | | | | | |
| | | | | | | |
| | | | | | | |
| | | | | | | |

GENERAL NOTES (I.O.N.)

1. THIS DRAWING TO BE READ IN CONJUNCTION WITH RELEVANT ASSEMBLY DRAWINGS
2. DIMENSIONS - MILLIMETRES (METRIC)
3. HOLES - 230 FOR M20 G8 8 BOLTS
4. WELDS - 25mm FLLET CONT.
5. MATERIAL - GRADE S235JR
6. NOTCHES - CORNER RADIUS 15mm (MIN)
7. PAINTING - REFER ENGINEERS SPECIFICATION

VSE VAN STADEN ENGINEERING
 8 Molekulê Road
 Vulcaania
 Brakpan

Tel: +27 11 813 1304
 F: +27 11 813 3144
 www.vanstadeng.co.za

mond cane

8 Widdowson Drive, East Rand
 T: +27 21 852 2447 F: +27 21 852 3099
 www.mondcane.co.za

Project: MOGALAKWENA PLATINUM - MOBILE PLANT

Client: MMD Mining Machinery Developments Limited
 Registered Office: 114, 114-115, 116, 117, 118, 119, 120, 121, 122, 123, 124, 125, 126, 127, 128, 129, 130, 131, 132, 133, 134, 135, 136, 137, 138, 139, 140, 141, 142, 143, 144, 145, 146, 147, 148, 149, 150, 151, 152, 153, 154, 155, 156, 157, 158, 159, 160, 161, 162, 163, 164, 165, 166, 167, 168, 169, 170, 171, 172, 173, 174, 175, 176, 177, 178, 179, 180, 181, 182, 183, 184, 185, 186, 187, 188, 189, 190, 191, 192, 193, 194, 195, 196, 197, 198, 199, 200, 201, 202, 203, 204, 205, 206, 207, 208, 209, 210, 211, 212, 213, 214, 215, 216, 217, 218, 219, 220, 221, 222, 223, 224, 225, 226, 227, 228, 229, 230, 231, 232, 233, 234, 235, 236, 237, 238, 239, 240, 241, 242, 243, 244, 245, 246, 247, 248, 249, 250, 251, 252, 253, 254, 255, 256, 257, 258, 259, 260, 261, 262, 263, 264, 265, 266, 267, 268, 269, 270, 271, 272, 273, 274, 275, 276, 277, 278, 279, 280, 281, 282, 283, 284, 285, 286, 287, 288, 289, 290, 291, 292, 293, 294, 295, 296, 297, 298, 299, 300, 301, 302, 303, 304, 305, 306, 307, 308, 309, 310, 311, 312, 313, 314, 315, 316, 317, 318, 319, 320, 321, 322, 323, 324, 325, 326, 327, 328, 329, 330, 331, 332, 333, 334, 335, 336, 337, 338, 339, 340, 341, 342, 343, 344, 345, 346, 347, 348, 349, 350, 351, 352, 353, 354, 355, 356, 357, 358, 359, 360, 361, 362, 363, 364, 365, 366, 367, 368, 369, 370, 371, 372, 373, 374, 375, 376, 377, 378, 379, 380, 381, 382, 383, 384, 385, 386, 387, 388, 389, 390, 391, 392, 393, 394, 395, 396, 397, 398, 399, 400, 401, 402, 403, 404, 405, 406, 407, 408, 409, 410, 411, 412, 413, 414, 415, 416, 417, 418, 419, 420, 421, 422, 423, 424, 425, 426, 427, 428, 429, 430, 431, 432, 433, 434, 435, 436, 437, 438, 439, 440, 441, 442, 443, 444, 445, 446, 447, 448, 449, 450, 451, 452, 453, 454, 455, 456, 457, 458, 459, 460, 461, 462, 463, 464, 465, 466, 467, 468, 469, 470, 471, 472, 473, 474, 475, 476, 477, 478, 479, 480, 481, 482, 483, 484, 485, 486, 487, 488, 489, 490, 491, 492, 493, 494, 495, 496, 497, 498, 499, 500, 501, 502, 503, 504, 505, 506, 507, 508, 509, 510, 511, 512, 513, 514, 515, 516, 517, 518, 519, 520, 521, 522, 523, 524, 525, 526, 527, 528, 529, 530, 531, 532, 533, 534, 535, 536, 537, 538, 539, 540, 541, 542, 543, 544, 545, 546, 547, 548, 549, 550, 551, 552, 553, 554, 555, 556, 557, 558, 559, 560, 561, 562, 563, 564, 565, 566, 567, 568, 569, 570, 571, 572, 573, 574, 575, 576, 577, 578, 579, 580, 581, 582, 583, 584, 585, 586, 587, 588, 589, 590, 591, 592, 593, 594, 595, 596, 597, 598, 599, 600, 601, 602, 603, 604, 605, 606, 607, 608, 609, 610, 611, 612, 613, 614, 615, 616, 617, 618, 619, 620, 621, 622, 623, 624, 625, 626, 627, 628, 629, 630, 631, 632, 633, 634, 635, 636, 637, 638, 639, 640, 641, 642, 643, 644, 645, 646, 647, 648, 649, 650, 651, 652, 653, 654, 655, 656, 657, 658, 659, 660, 661, 662, 663, 664, 665, 666, 667, 668, 669, 670, 671, 672, 673, 674, 675, 676, 677, 678, 679, 680, 681, 682, 683, 684, 685, 686, 687, 688, 689, 690, 691, 692, 693, 694, 695, 696, 697, 698, 699, 700, 701, 702, 703, 704, 705, 706, 707, 708, 709, 710, 711, 712, 713, 714, 715, 716, 717, 718, 719, 720, 721, 722, 723, 724, 725, 726, 727, 728, 729, 730, 731, 732, 733, 734, 735, 736, 737, 738, 739, 740, 741, 742, 743, 744, 745, 746, 747, 748, 749, 750, 751, 752, 753, 754, 755, 756, 757, 758, 759, 760, 761, 762, 763, 764, 765, 766, 767, 768, 769, 770, 771, 772, 773, 774, 775, 776, 777, 778, 779, 780, 781, 782, 783, 784, 785, 786, 787, 788, 789, 790, 791, 792, 793, 794, 795, 796, 797, 798, 799, 800, 801, 802, 803, 804, 805, 806, 807, 808, 809, 810, 811, 812, 813, 814, 815, 816, 817, 818, 819, 820, 821, 822, 823, 824, 825, 826, 827, 828, 829, 830, 831, 832, 833, 834, 835, 836, 837, 838, 839, 840, 841, 842, 843, 844, 845, 846, 847, 848, 849, 850, 851, 852, 853, 854, 855, 856, 857, 858, 859, 860, 861, 862, 863, 864, 865, 866, 867, 868, 869, 870, 871, 872, 873, 874, 875, 876, 877, 878, 879, 880, 881, 882, 883, 884, 885, 886, 887, 888, 889, 890, 891, 892, 893, 894, 895, 896, 897, 898, 899, 900, 901, 902, 903, 904, 905, 906, 907, 908, 909, 910, 911, 912, 913, 914, 915, 916, 917, 918, 919, 920, 921, 922, 923, 924, 925, 926, 927, 928, 929, 930, 931, 932, 933, 934, 935, 936, 937, 938, 939, 940, 941, 942, 943, 944, 945, 946, 947, 948, 949, 950, 951, 952, 953, 954, 955, 956, 957, 958, 959, 960, 961, 962, 963, 964, 965, 966, 967, 968, 969, 970, 971, 972, 973, 974, 975, 976, 977, 978, 979, 980, 981, 982, 983, 984, 985, 986, 987, 988, 989, 990, 991, 992, 993, 994, 995, 996, 997, 998, 999, 1000

Client: MOGALAKWENA PLATINUM - MOBILE PLANT

Project: FEEDER HOPPER MODULE
 HOPPER
 ISOMETRIC VIEW

Rev: 1:30

Scale: 1:30

Rev: RFC

Rev: A1

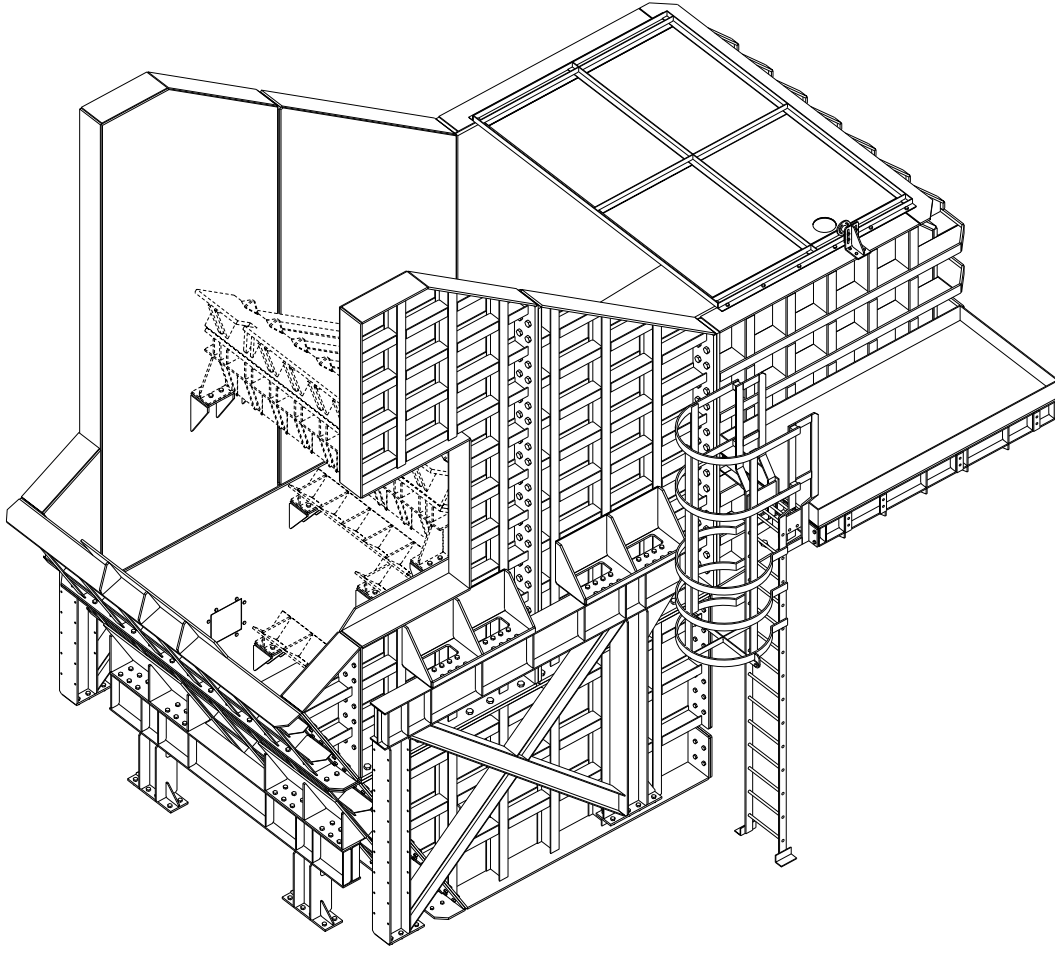
Rev: 2482-2-003

Rev: 0

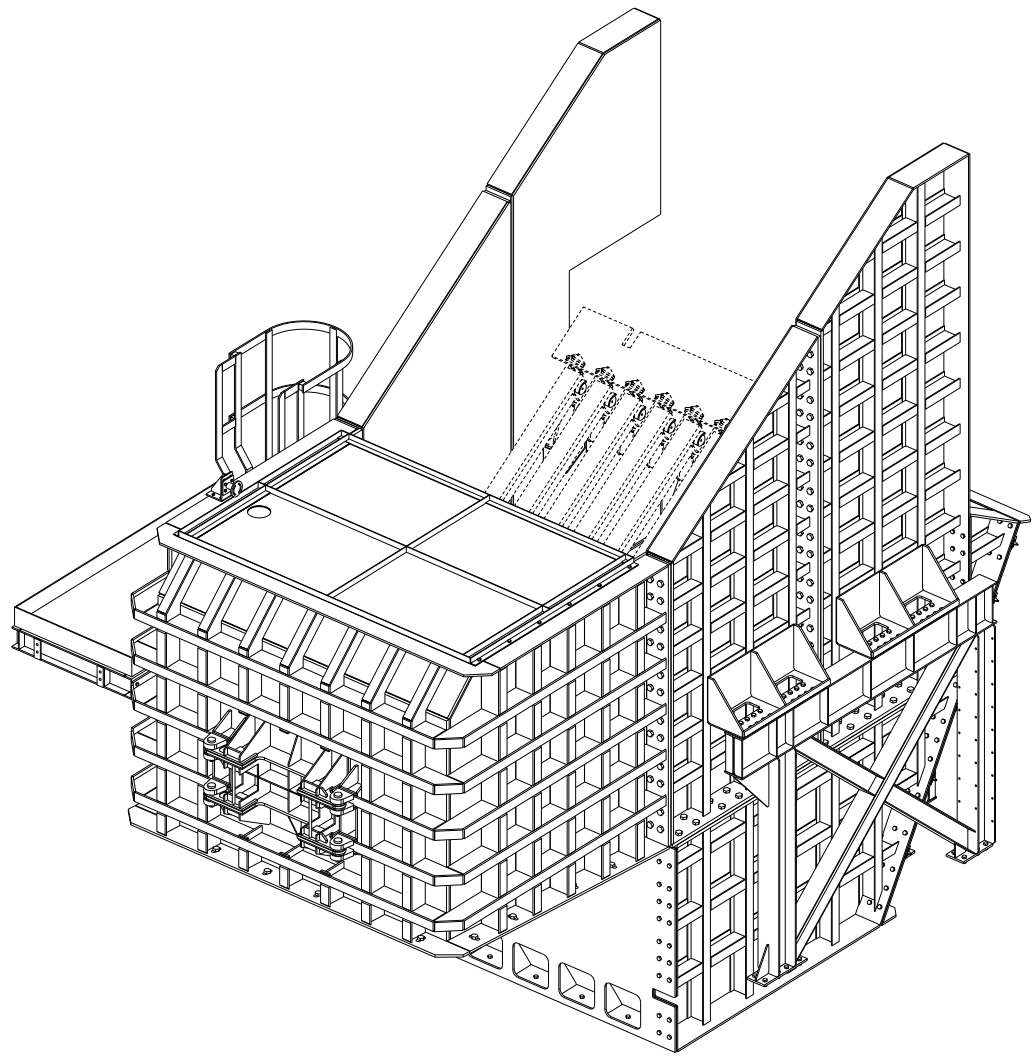
REF: 148022830

GENERAL NOTES (U.O.N):

1. ALL STRUCTURAL FASTENERS TO BE OF 8.8 BLACK BOLTS
2. ALL BOLTS SHALL BE INSTALLED WITH A WASHER UNDER THE NUT & BOLT HEAD IN ACCORDANCE WITH SIS EN 1033 18.3
3. BOLTS SHOWN AS OF 8.8 SHALL BE TIGHTENED TO SNUG TIGHT CONDITION
4. HOLDING DOWN BOLTS BY OTHERS
5. TO ACCOUNT FOR FASTENERS & WELDING, ADD 5% TO OVERALL MASS OF EACH PART FOR INSTALLATION & TRANSPORT PURPOSES



ISOMETRIC VIEW
SCALE 1:20



ISOMETRIC VIEW
SCALE 1:20

| REV | DESCRIPTION | STATUS | BY | DATE | REF. DRG No. | DESCRIPTION |
|-----|------------------------|--------|----|------------|--------------|-------------|
| 0 | ISSUED FOR FABRICATION | RFC | NT | 16.11.2018 | | |
| | | | | | | |
| | | | | | | |
| | | | | | | |

GENERAL NOTES (U.O.N)

1. THIS DRAWING TO BE READ IN CONJUNCTION WITH RELEVANT ASSEMBLY DRAWINGS.
2. DIMENSIONS - MILLIMETRES (METRIC)
3. HOLES - 200 FOR M20 OF 8.8 BOLTS
4. WELDS - 25mm FILET CONT
5. MATERIAL - GRADE S355JR
6. NOTCHES - CORNER RADIUS 11mm (MIN)
7. PAINTING - REFER ENGINEERS SPECIFICATION

VSE VAN STADEN ENGINEERING

8 Moleculer Road
Vulcania
Brixton

Tel: +27 11 813 1304
Fax: +27 11 817 3144
www.vanstadeng.co.za

mondo cane

e: info@mondocane.co.za
t: +27 21 852-0447 | f: +27 21 852-0996
www.mondocane.co.za

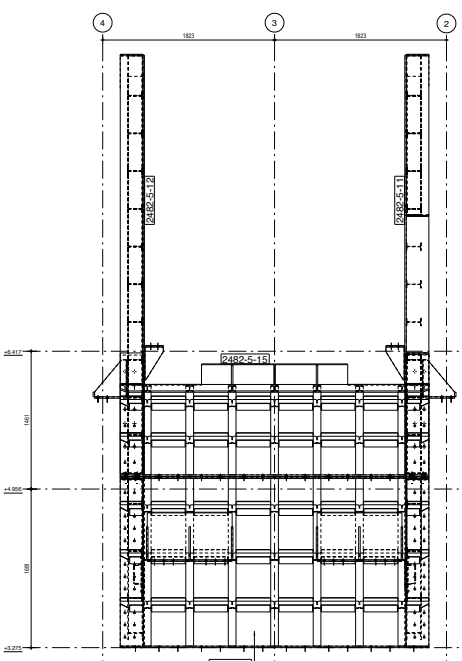
Project: **MOGALAKWENA PLATINUM - MOBILE PLANT**

THE SIZER MODULE FEED CHUTE ISOMETRIC VIEW

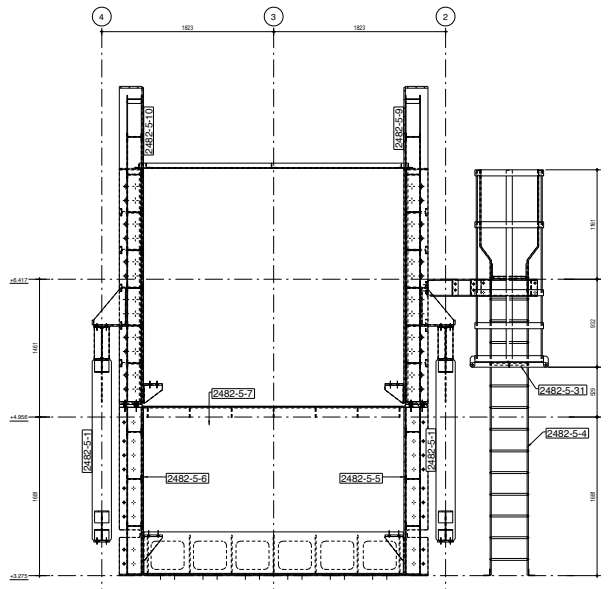
Design Reference: **2482-5-001**

| MMD Mining Machinery Developments Limited Registered Office: 81-1 Nardina Circle, Longwood Road, Edendale, South Africa | |
|--|------------------|
| Model No: RC | Checked: _____ |
| Date: 18.03.2019 | Approved: _____ |
| Scale: 1:20 | Date: RFC |
| Sheet No: A1 | Rev: 0 |

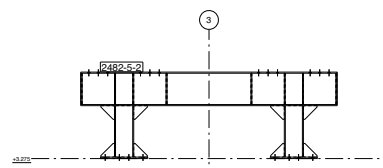
GENERAL NOTES:
 1. ALL DIMENSIONS UNLESS SPECIFIED AS IN BOLD TYPE.
 2. ALL DIMENSIONS TO FACE UNLESS SPECIFIED OTHERWISE.
 3. ALL DIMENSIONS TO FACE UNLESS SPECIFIED OTHERWISE.
 4. ALL DIMENSIONS TO FACE UNLESS SPECIFIED OTHERWISE.
 5. TO ACCOUNT FOR FABRICATION & WELDING, ADD 5% TO OVERALL DIMS OF EACH PART FOR INSTALLATION & WELDING TOLERANCES.



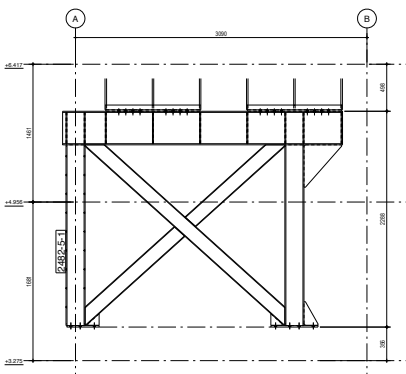
ELEVATION GRID A - HOPPER SUPPORT OMITTED FOR CLARITY
 SCALE 1:20



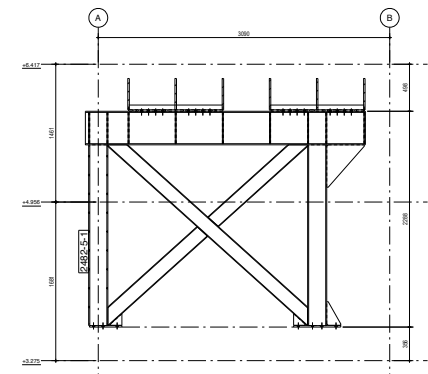
SECTION GRID B
 SCALE 1:20



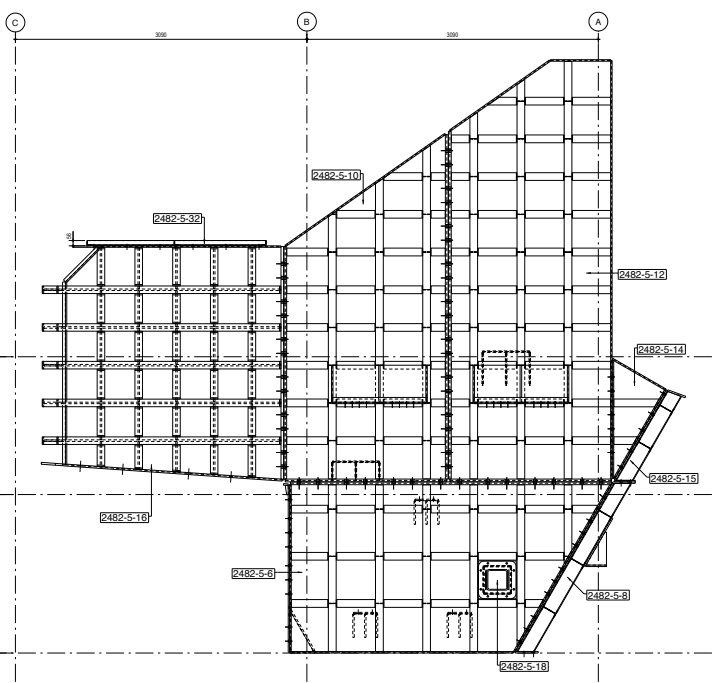
ELEVATION GRID A - HOPPER SUPPORT ONLY
 SCALE 1:20



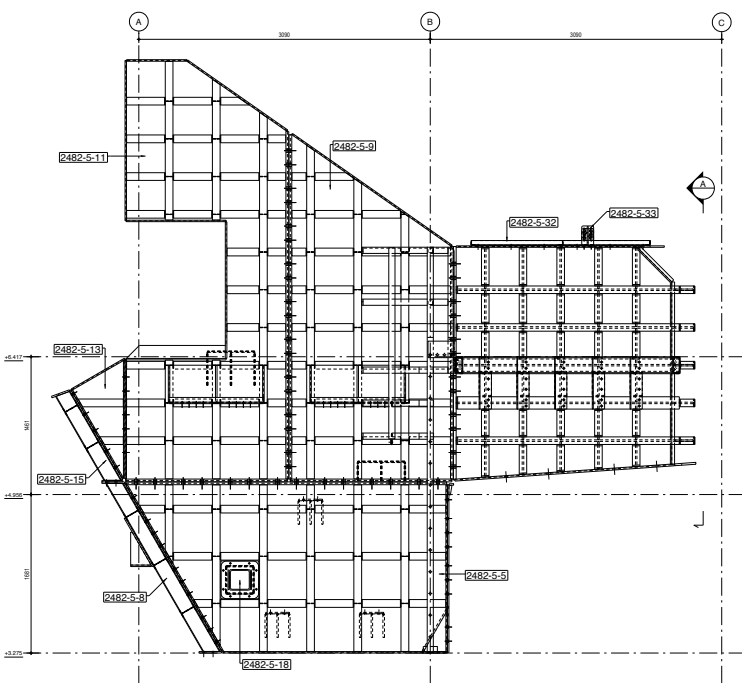
SECTION GRID 2
 SCALE 1:20



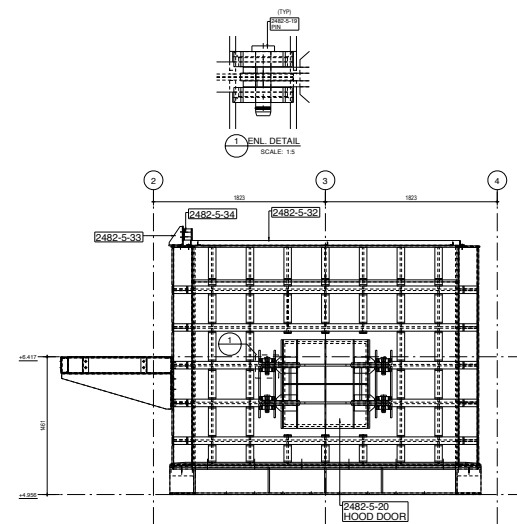
SECTION GRID 4
 SCALE 1:20



ELEVATION GRID 4
 SCALE 1:20



ELEVATION GRID 2
 SCALE 1:20



SECTION A
 SCALE 1:20

ENL. DETAIL
 SCALE 1:5

| REV | DESCRIPTION | DATE | BY | CHK | APP | DESCRIPTION |
|-----|-------------------------|------------|----|-----|-----|-------------|
| 1 | ISSUED FOR CONSTRUCTION | 18/03/2019 | | | | |

GENERAL NOTES (I.O.B)
 1. THIS DRAWING IS TO BE USED IN CONSTRUCTION WITH RELEVANT ASSEMBLY DRAWINGS.
 2. DIMENSIONS - ALL DIMENSIONS ARE IN METERS.
 3. HOLES - DIM FOR HOLES IS 8 BOLTS.
 4. WELDS - DIM FOR WELDS IS 8 BOLTS.
 5. MATERIALS - DIM FOR MATERIALS IS 8 BOLTS.
 6. FINISHES - DIM FOR FINISHES IS 8 BOLTS.
 7. PAINTING - DIM FOR PAINTING IS 8 BOLTS.

VSE VAN STADDER ENGINEERING
 11th Floor, 11th Floor, 11th Floor
 Tel: +27 11 813 1304
 Fax: +27 11 817 5144
 www.vse-engineering.co.za

mond cane
 MOGALAKWENA PLATINUM - MOBILE PLANT
 FEED CHUTE
 GRID VIEWS

Mogalakwena Platinum - Mobile Plant
 SIZER MODULE
 FEED CHUTE
 GRID VIEWS
 18/03/2019
 15 120
 A1 2482-5-003