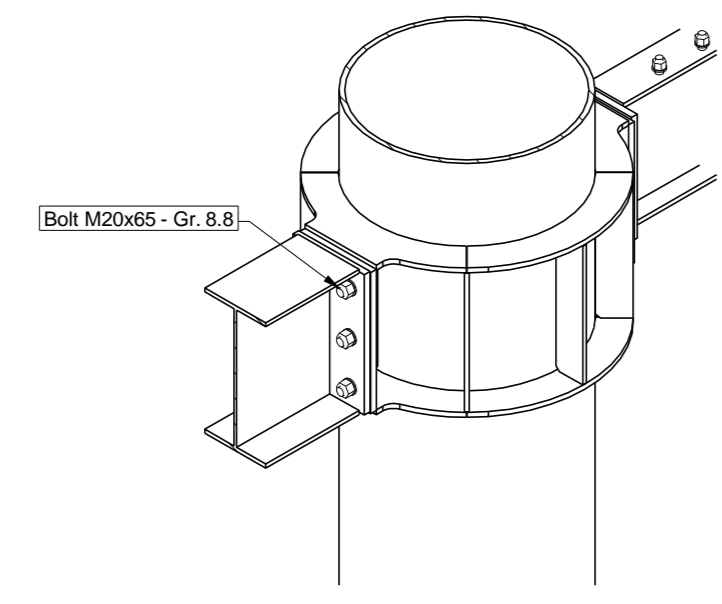
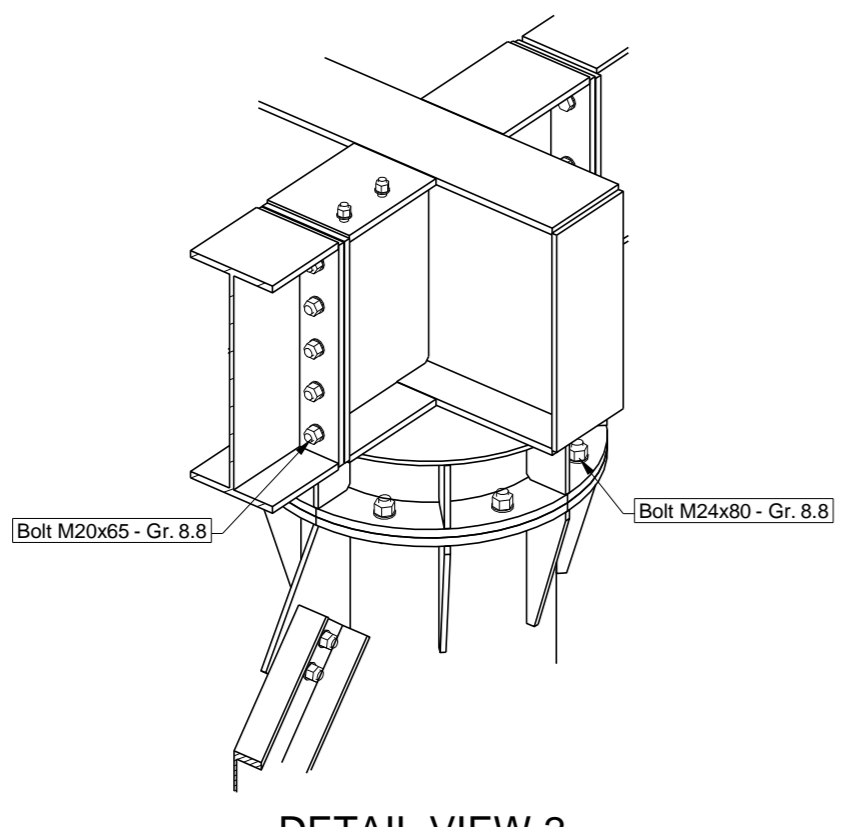


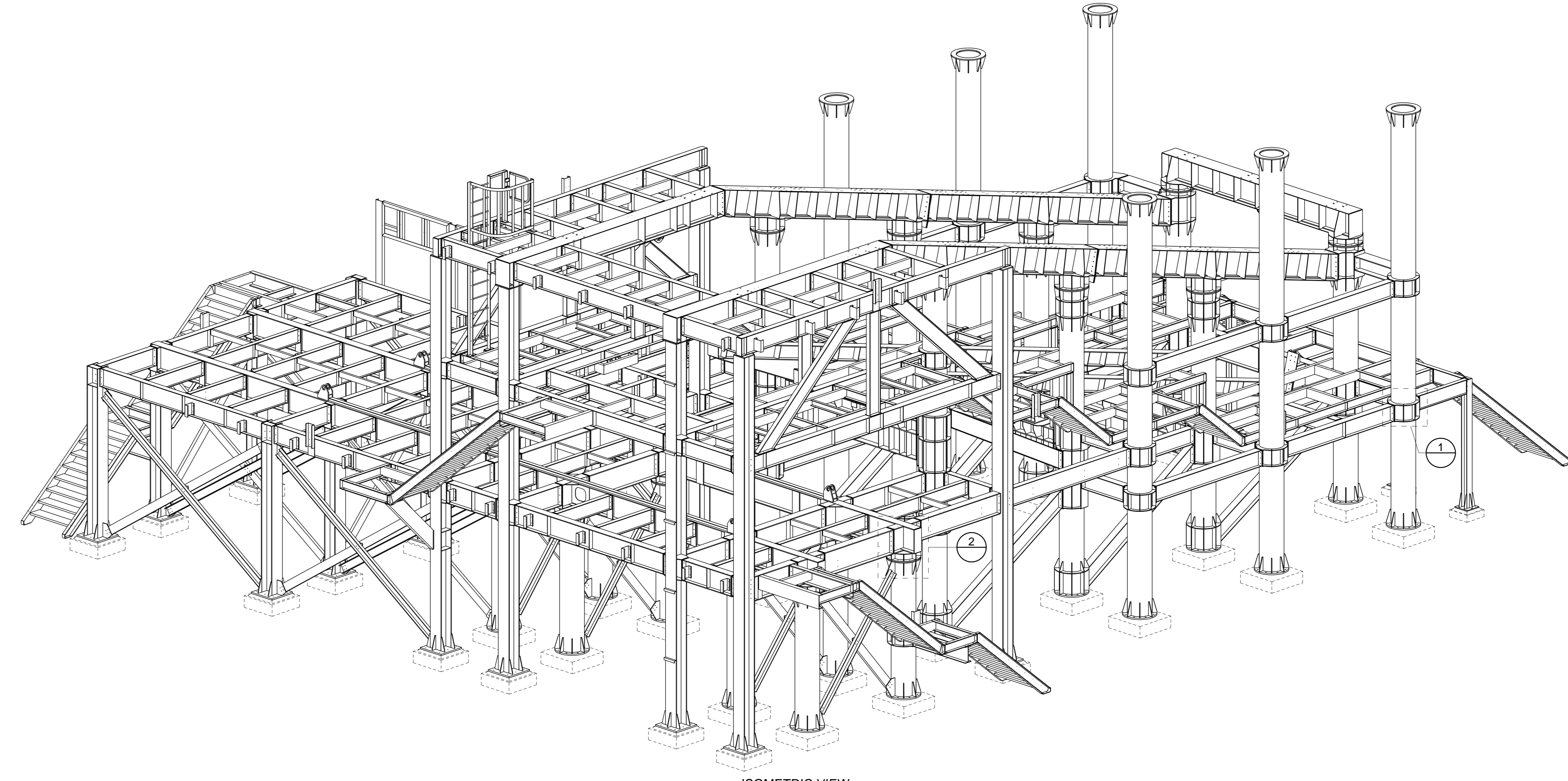
GENERAL NOTES (U.O.N.)
 1. ALL STRUCTURAL FASTENERS TO BE HOT DIP GALVANIZED G.B.
 2. ALL BOLTS SHALL BE INSTALLED WITH A WASHER UNDER THE NUT & BOLT HEAD
 3. BOLTS TO SHOWN AS G.B. SHALL BE TIGHTENED TO SHG3 TIGHT CONDITION
 4. WELDING SHALL BE TO SWS 18.3
 5. TO ACCOUNT FOR FASTENERS & WELDING, ADD 1% TO OVERALL MASS OF EACH PART FOR INSTALLATION & TRANSPORT PURPOSES



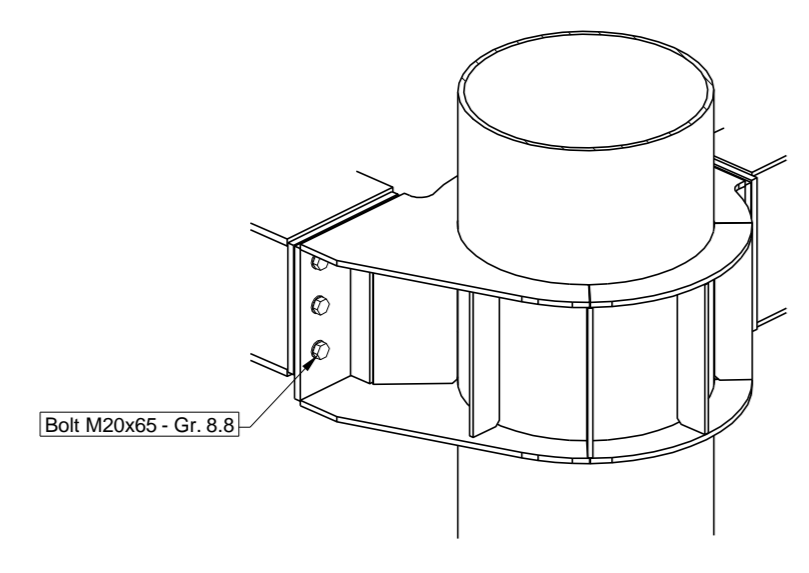
DETAIL VIEW 1
SCALE 1:15



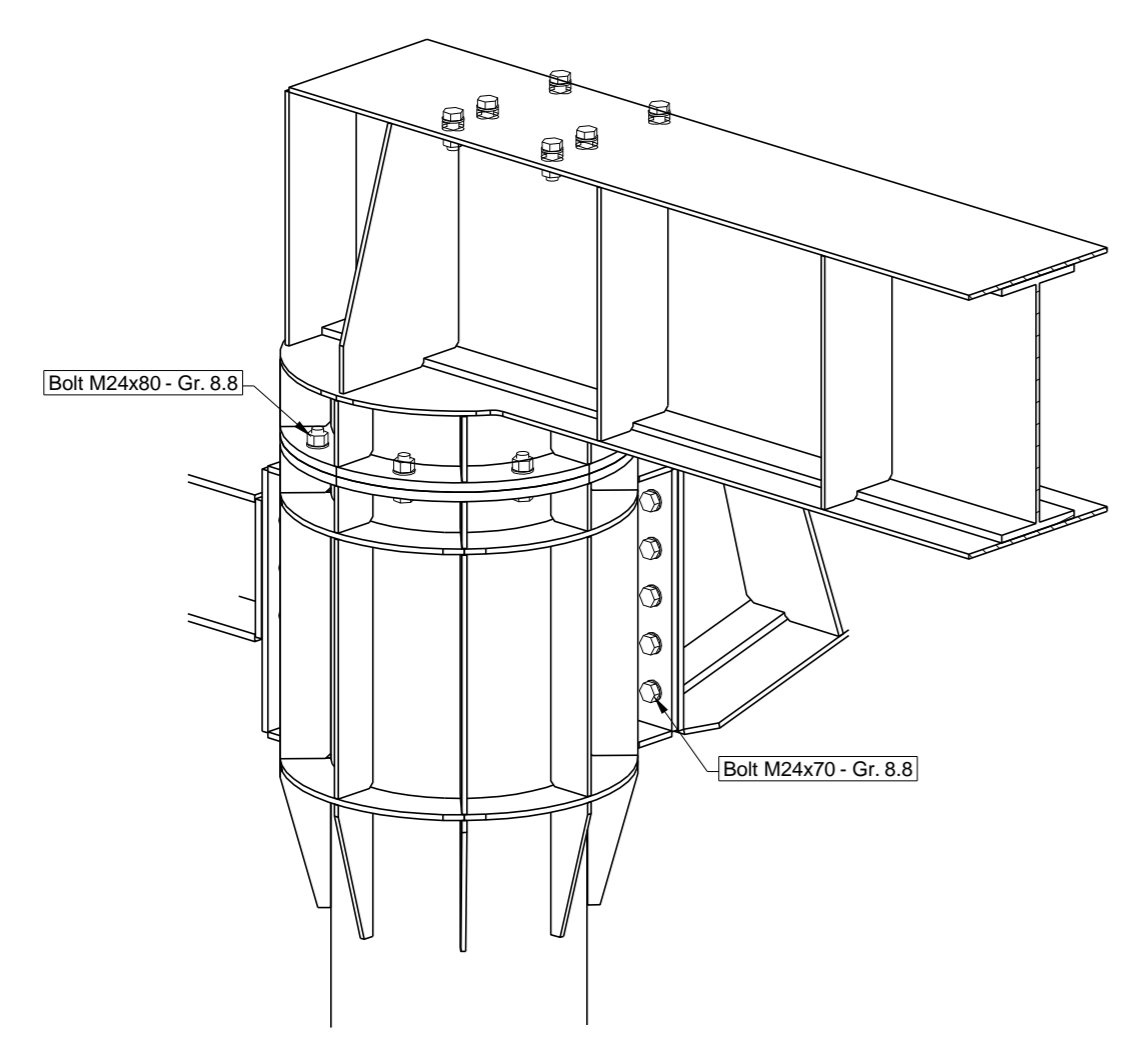
DETAIL VIEW 2
SCALE 1:15



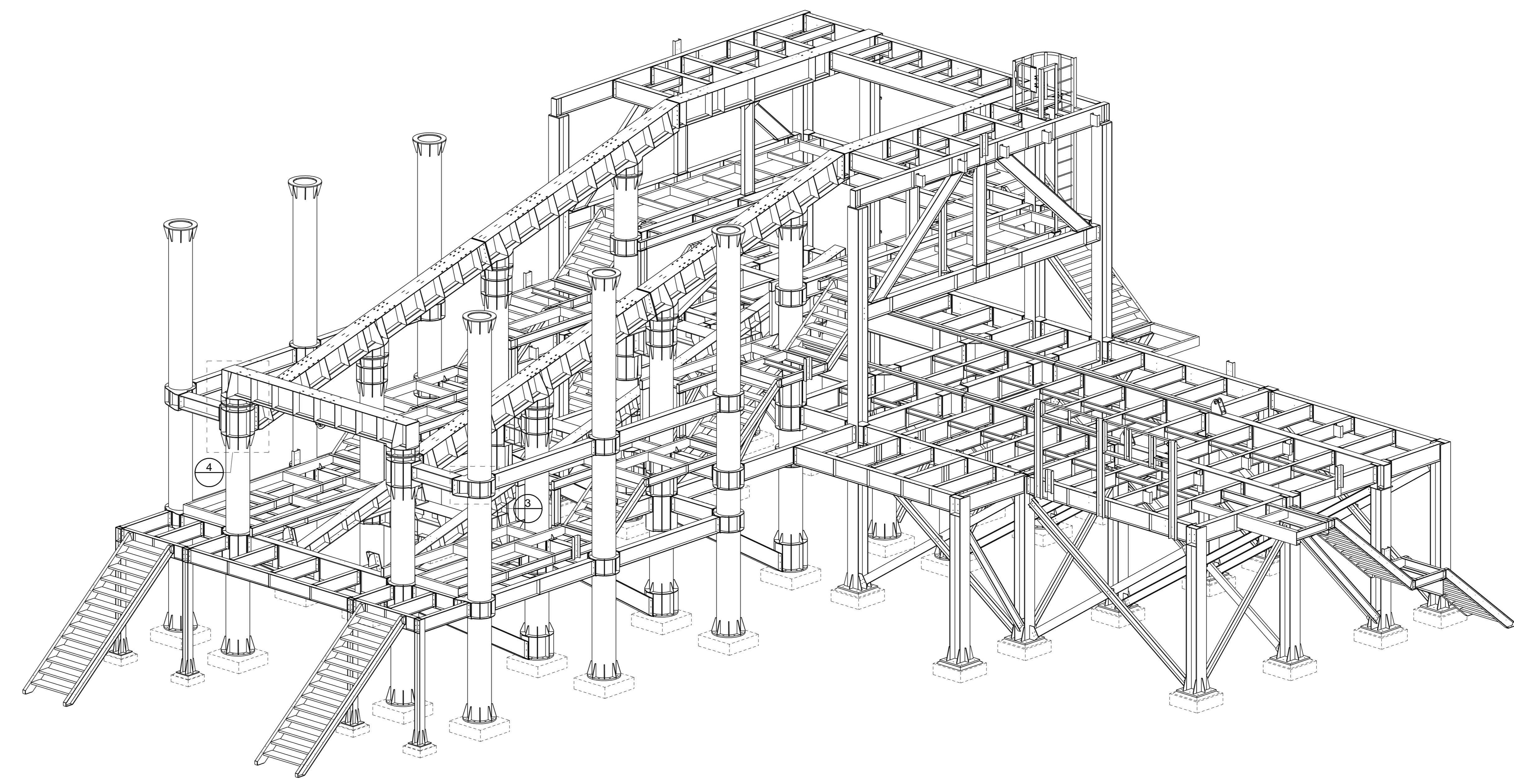
ISOMETRIC VIEW
SCALE 1:50



DETAIL VIEW 3
SCALE 1:15



DETAIL VIEW 4
SCALE 1:15



ISOMETRIC VIEW
SCALE 1:50

REV	DESCRIPTION	STATUS	BY	DATE	REF. DRG. No.	DESCRIPTION
A	ISSUED FOR APPROVAL	RFC	MC	04/04/2018		
0	ISSUED FOR CONSTRUCTION	RFC	MC	04/04/2018		

GENERAL NOTES (U.O.N.)
 1. THIS DRAWING TO BE READ IN CONJUNCTION WITH RELEVANT ASSEMBLY DRAWINGS.
 2. DIMENSIONS - MILLIMETRES (METRIC)
 3. HOLES - 220 FOR M20 Gr. 8.8 BOLTS
 4. WELDS - 6mm FLET CONT.
 5. MATERIAL - GRADE S355JR
 6. NOTCHES - CORNER RADIUS 15mm (MIN)
 7. PAINTING - REFER: ENGINEERS SPECIFICATION

VSE VAN STADEN ENGINEERING
 8 Moleculer Road
 Vulcania
 Brakpan
 Tel: +27 11 813 1304
 Fax: +27 11 817 3144
 www.vanstadeng.co.za

mondo cane
 e: info@mondocane.co.za
 t: +27 21 855-2447 | +27 21 855-2699
 www.mondocane.co.za

Project: GUINEA ALUMINA EXPORT PROJECT - PHASE 1
 MMD Mining Machinery Developments Limited
 Registered Office: No 1 Ngweni Drive, Longmeadow West, Ekurhuleni
 South Africa
 Title: BAUXITE SIZING STATION
 PRIMARY STRUCTURE
 ISOMETRIC VIEW
 REF: 24SA-GBE01-010000
 Date: 11.04.2018
 Scale: 1:15 1:50
 Sheet: A1 of 2
 2465-24SA-10-001