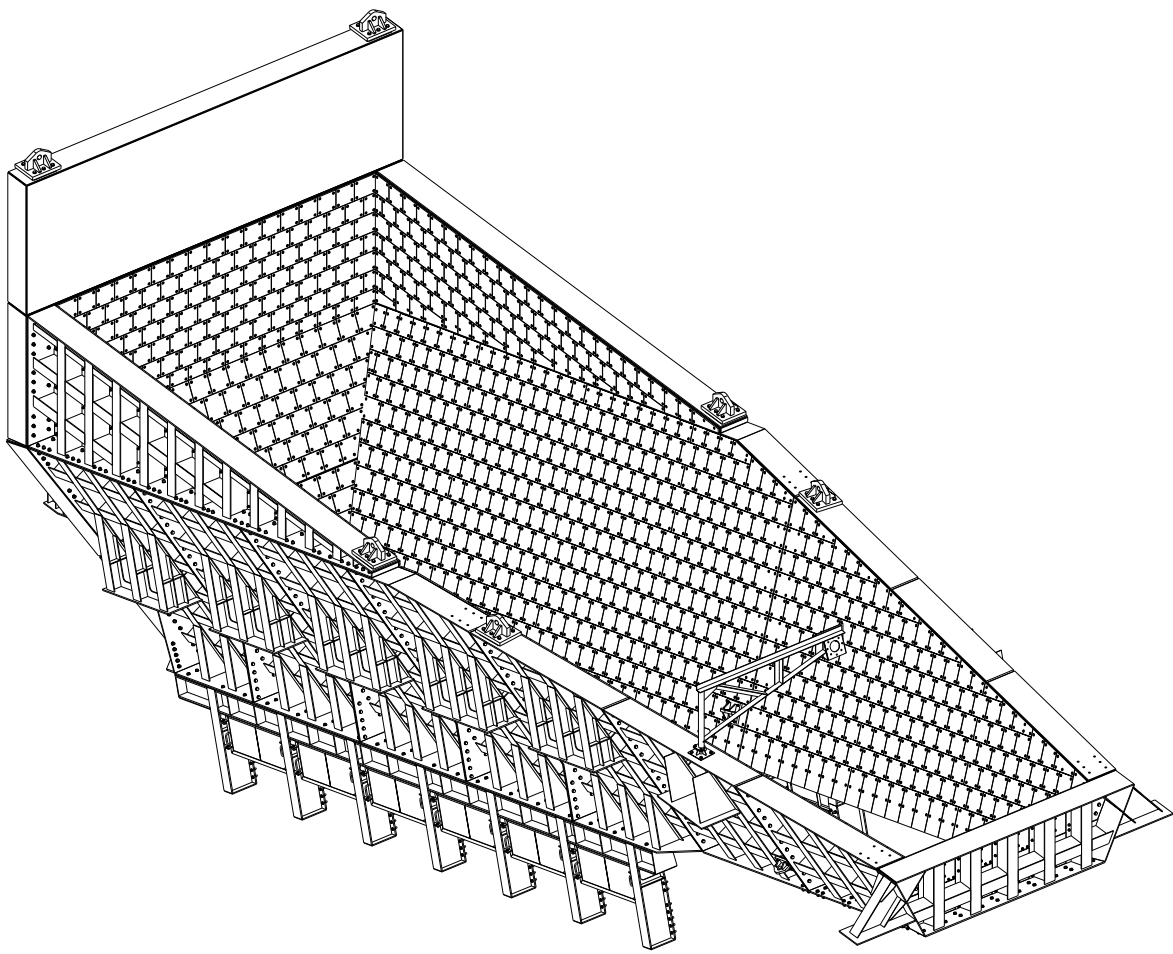
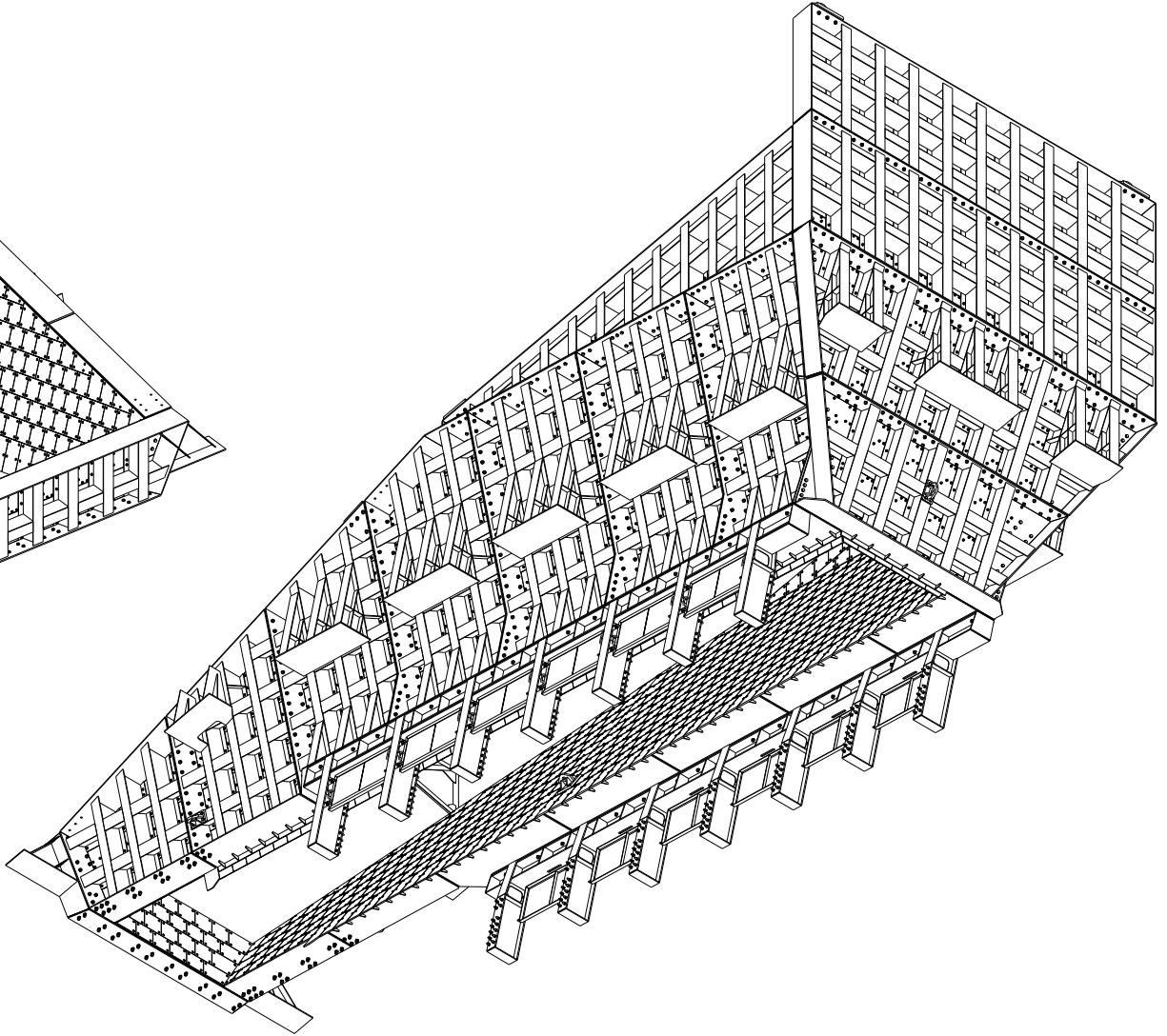


REVISIONS

1. ALL DIMENSIONS REFER TO SET OF GA UNLESS STATED OTHERWISE
2. ALL DIMENSIONS TO BE CHECKED BY THE CONTRACTOR TO BE SURE THAT THE DIMENSIONS ARE AS SHOWN ON THE DRAWING TO BE CONSTRUCTED
3. DIMENSIONS TO BE CHECKED BY THE CONTRACTOR TO BE SURE THAT THE DIMENSIONS ARE AS SHOWN ON THE DRAWING TO BE CONSTRUCTED
4. DIMENSIONS TO BE CHECKED BY THE CONTRACTOR TO BE SURE THAT THE DIMENSIONS ARE AS SHOWN ON THE DRAWING TO BE CONSTRUCTED
5. DIMENSIONS TO BE CHECKED BY THE CONTRACTOR TO BE SURE THAT THE DIMENSIONS ARE AS SHOWN ON THE DRAWING TO BE CONSTRUCTED
6. DIMENSIONS TO BE CHECKED BY THE CONTRACTOR TO BE SURE THAT THE DIMENSIONS ARE AS SHOWN ON THE DRAWING TO BE CONSTRUCTED
7. DIMENSIONS TO BE CHECKED BY THE CONTRACTOR TO BE SURE THAT THE DIMENSIONS ARE AS SHOWN ON THE DRAWING TO BE CONSTRUCTED
8. DIMENSIONS TO BE CHECKED BY THE CONTRACTOR TO BE SURE THAT THE DIMENSIONS ARE AS SHOWN ON THE DRAWING TO BE CONSTRUCTED
9. DIMENSIONS TO BE CHECKED BY THE CONTRACTOR TO BE SURE THAT THE DIMENSIONS ARE AS SHOWN ON THE DRAWING TO BE CONSTRUCTED
10. DIMENSIONS TO BE CHECKED BY THE CONTRACTOR TO BE SURE THAT THE DIMENSIONS ARE AS SHOWN ON THE DRAWING TO BE CONSTRUCTED



ISOMETRIC VIEW - ROM BIN - VIEW 1
SCALE 1:25



ISOMETRIC VIEW - ROM BIN - VIEW 2
SCALE 1:25

REV	DESCRIPTION	DATE	BY	CHKD	REF. ORG. No.	DESCRIPTION
1	ISSUED FOR PERMIT	15/02/2018	RPC	RPC		
2	ISSUED FOR FABRICATION	22/02/2018	RPC	RPC		

GENERAL NOTES (G.O.N)

1. THIS DRAWING IS TO BE READ IN CONJUNCTION WITH RELEVANT AGREEMENTS, SPECIFICATIONS, AND STANDARDS.
2. DIMENSIONS - ALL DIMENSIONS ARE TO FACE UNLESS OTHERWISE SPECIFIED.
3. HOLES - ALL HOLES ARE TO BE DRILLED TO THE REQUIRED SIZE AND FINISH.
4. BRACES - ALL BRACES ARE TO BE DRILLED TO THE REQUIRED SIZE AND FINISH.
5. MATERIALS - ALL MATERIALS ARE TO BE AS SPECIFIED IN THE BILL OF MATERIALS.
6. FINISHES - ALL FINISHES ARE TO BE AS SPECIFIED IN THE BILL OF MATERIALS.
7. PAINTING - REFER ENGINEERS SPECIFICATION.

REV	DESCRIPTION	DATE	BY	CHKD	REF. ORG. No.	DESCRIPTION
1	ISSUED FOR PERMIT	15/02/2018	RPC	RPC		
2	ISSUED FOR FABRICATION	22/02/2018	RPC	RPC		

YAN STADEN ENGINEERING

18 Milesley Park
Chalfont

Tel: +27 11 813 1304
Fax: +27 11 817 9184
www.yanstadeneng.co.za

mondo cane

1. #100@mondocane.co.za
1. +27 21 892 2471 / +27 21 892 2499

GUINEA ALUMINA EXPORT PROJECT - PHASE 1

BAUXITE SIZING STATION

ROM BIN

ISOMETRIC VIEW

REF: 14SA-GBED1-020200

MMD Mining Machinery Developments Limited
15/02/2018

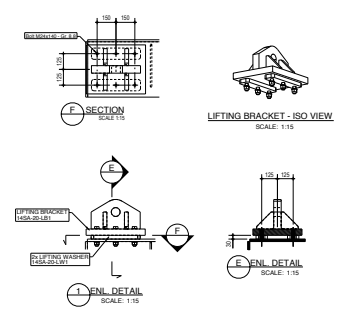
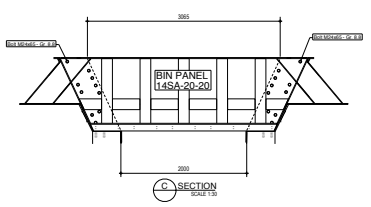
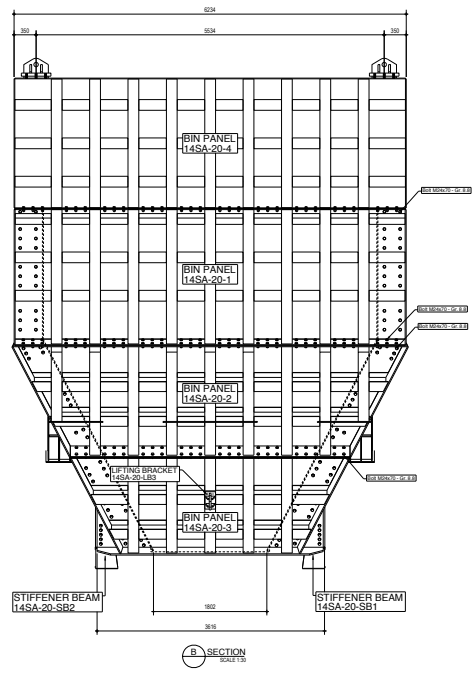
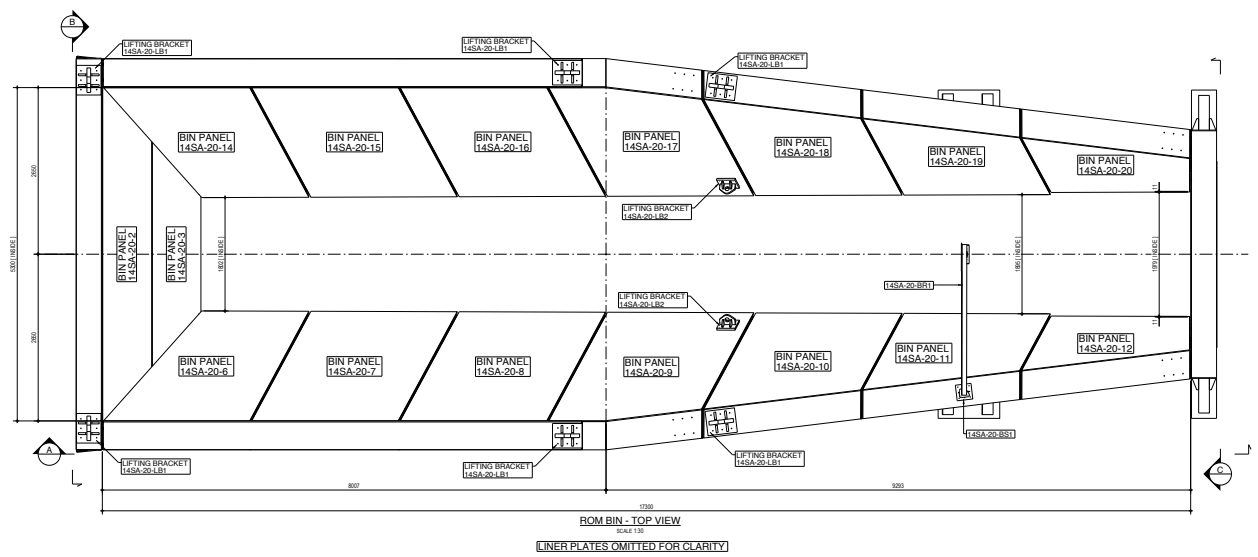
1:25

RPC

A1 2465-24SA-20-001

0

GENERAL NOTES:
 1. ALL DIMENSIONS UNLESS OTHERWISE SPECIFIED ARE IN METERS.
 2. ALL DIMENSIONS ARE TO FACE UNLESS OTHERWISE SPECIFIED.
 3. DIMENSIONS TO FACE UNLESS OTHERWISE SPECIFIED.
 4. DIMENSIONS TO FACE UNLESS OTHERWISE SPECIFIED.
 5. DIMENSIONS TO FACE UNLESS OTHERWISE SPECIFIED.
 6. DIMENSIONS TO FACE UNLESS OTHERWISE SPECIFIED.
 7. DIMENSIONS TO FACE UNLESS OTHERWISE SPECIFIED.
 8. DIMENSIONS TO FACE UNLESS OTHERWISE SPECIFIED.
 9. DIMENSIONS TO FACE UNLESS OTHERWISE SPECIFIED.
 10. DIMENSIONS TO FACE UNLESS OTHERWISE SPECIFIED.



REV	DESCRIPTION	DATE	BY	CHKD	APP'D	DESCRIPTION
1	ISSUED FOR PERMIT	15/02/2018	RC	RC		
2	ISSUED FOR FABRICATION	22/02/2018	RC	RC		

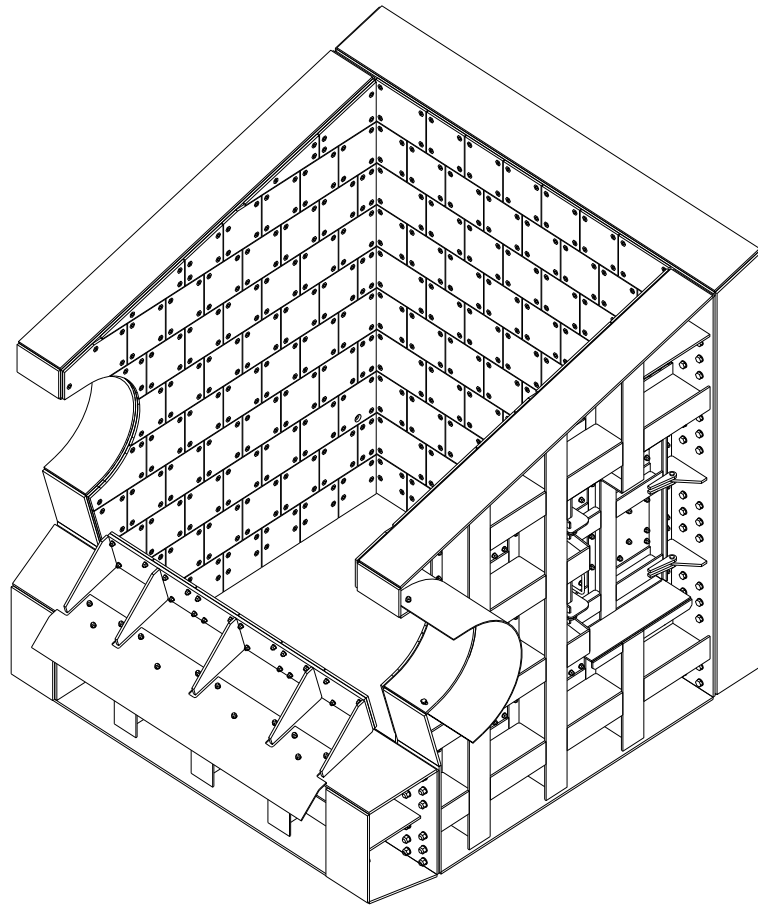
GENERAL NOTES (I.O.N)
 1. THIS DRAWING TO BE READ IN CONJUNCTION WITH RELEVANT ASSUMPTIONS, SPECIFICATIONS, AND DRAWINGS.
 2. DIMENSIONS TO FACE UNLESS OTHERWISE SPECIFIED.
 3. DIMENSIONS TO FACE UNLESS OTHERWISE SPECIFIED.
 4. DIMENSIONS TO FACE UNLESS OTHERWISE SPECIFIED.
 5. DIMENSIONS TO FACE UNLESS OTHERWISE SPECIFIED.
 6. DIMENSIONS TO FACE UNLESS OTHERWISE SPECIFIED.
 7. DIMENSIONS TO FACE UNLESS OTHERWISE SPECIFIED.
 8. DIMENSIONS TO FACE UNLESS OTHERWISE SPECIFIED.
 9. DIMENSIONS TO FACE UNLESS OTHERWISE SPECIFIED.
 10. DIMENSIONS TO FACE UNLESS OTHERWISE SPECIFIED.

YAN STADYEN ENGINEERING
 3 Midland Way, Rydalmere, NSW 2114, Australia
 Tel: +27 11 813 1304 Fax: +27 11 817 9144 www.yanstadysten.com.au

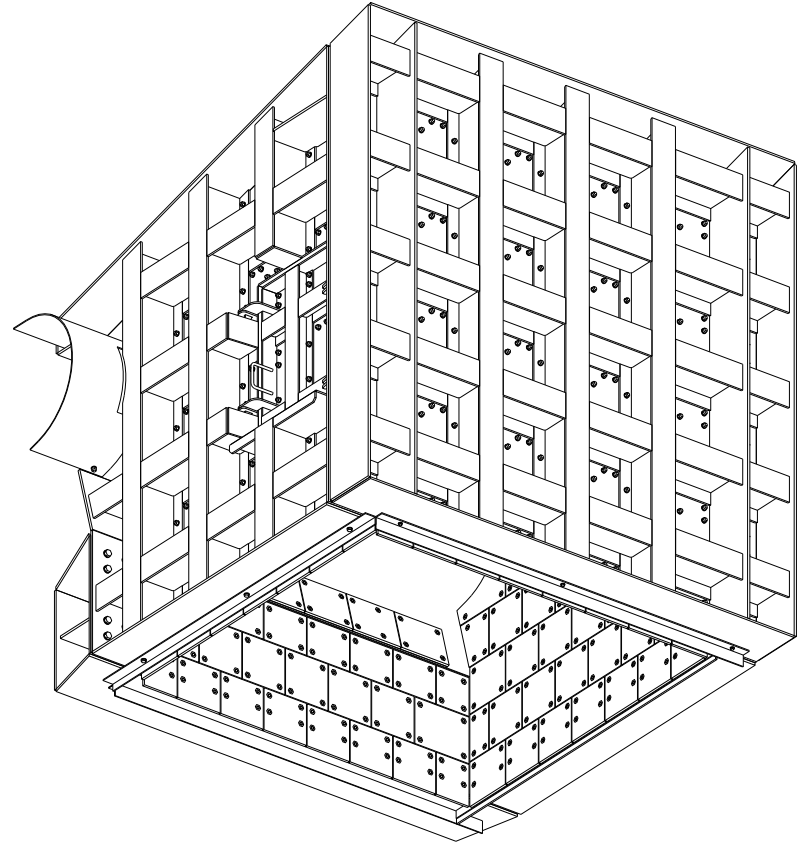
mondo cane
 GUINEA ALUMINA EXPORT PROJECT - PHASE 1
 BAUKITE SIZING STATION
 ROM BIN
 GENERAL ARRANGEMENT
 REF: 14SA-GBED1-020000

REV	DESCRIPTION	DATE	BY	CHKD	APP'D	DESCRIPTION
1	ISSUED FOR PERMIT	15/02/2018	RC	RC		
2	ISSUED FOR FABRICATION	22/02/2018	RC	RC		

- GENERAL NOTES (U.O.N):**
1. ALL STRUCTURAL FASTENERS TO BE HOT DIP GALVANIZED G8.8
 2. ALL BOLTS SHALL BE INSTALLED WITH A WASHER UNDER THE NUT & BOLT HEAD IN ACCORDANCE WITH SIS EN 1033 18.2
 3. BOLTS SHOWN AS G. 8.8 SHALL BE TIGHTENED TO SAUC TIGHT CONDITION
 4. RUBBER SKIRTING TO BE TRIMMED ON SITE
 5. TYPICAL LINES GAP 5mm ALL ROUND
 6. ALL LINKERS TO BE MOUNTED WITH M16 COUNTERSUNK M8 BOLTS WITH NYLOC NUT
 7. TO ACCOUNT FOR FASTENERS & WELDING ADD 1% TO OVERALL MASS OF EACH PART FOR INSTALLATION & TRANSPORT PURPOSES



ISOMETRIC VIEW - PRIMARY FEED CHUTE - VIEW 1
SCALE 1:15



ISOMETRIC VIEW - PRIMARY FEED CHUTE - VIEW 2
SCALE 1:15

REV	DESCRIPTION	STATUS	BY	DATE	REF. DRG No.	DESCRIPTION
A	ISSUED FOR APPROVAL	RFC	RC	19.03.2018		
0	ISSUED FOR CONSTRUCTION	RFC	RC	19.03.2018		

GENERAL NOTES (U.O.N)

1. THIS DRAWING TO BE READ IN CONJUNCTION WITH RELEVANT ASSEMBLY DRAWINGS.
2. DIMENSIONS - MILLIMETRES (METRIC)
3. HOLES - 220 FOR M20 Gr. 8.8 BOLTS
4. WELDS - BRW FLAT CONT.
5. MATERIAL - GRADE S355JR
6. NOTCHES - CORNER RADIUS 11mm (MIN)
7. PAINTING - REFER ENGINEERS SPECIFICATION

VSE
VAN STADEN
ENGINEERING

8 Moleculer Road
Vulcania
Brisbane

Tel: +27 11 813 1304
Fax: +27 11 817 3144
www.vanstadeng.co.za

mondo cane

e: info@mondocane.co.za
t: +27 21 852-0447 f: +27 21 852-2666
www.mondocane.co.za

Project: **GUINEA ALUMINA EXPORT PROJECT - PHASE 1**

Client: **MMD Mining Machinery Developments Limited**
Registered Office: 81-1 Nardina Circle, Longwood Road, Ekurhuleni South Africa

Contract: **RC** | Document: **Approved**

Date: **22.03.2018**

Scale: **1:15** | Status: **RFC**

Drawn: **A1** | Drawn By: **2465-24SA-30-001** | Rev: **0**

Design Reference: **REF: 24SA-GBE01-030000**

