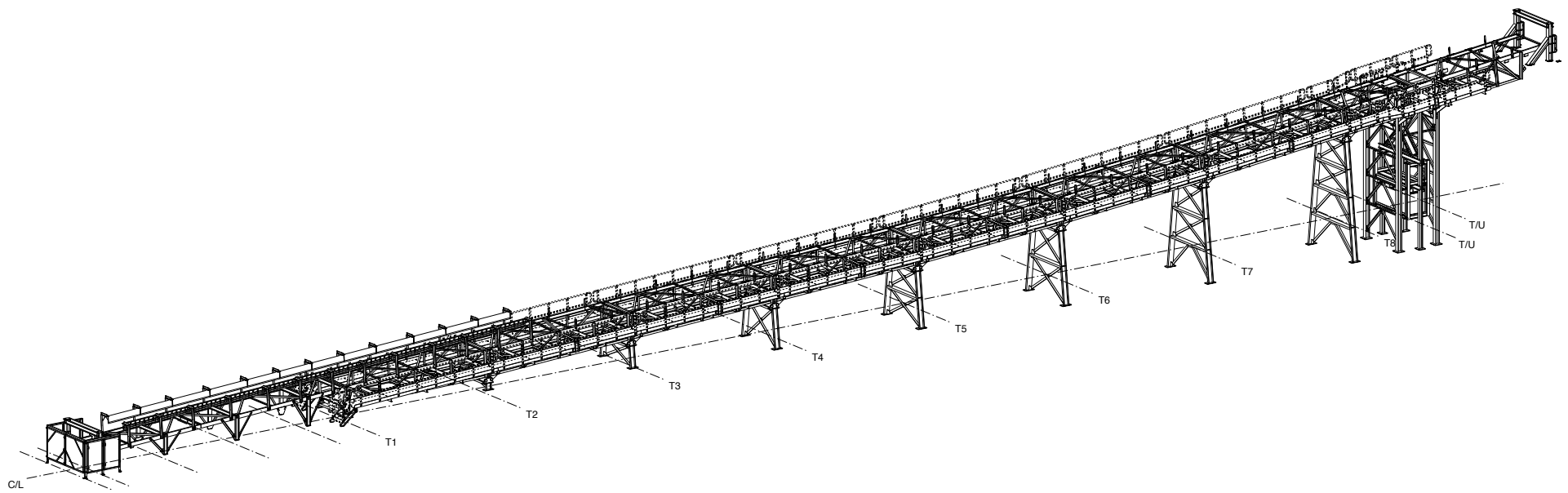


**GENERAL NOTES (U.O.N):**

1. ALL STRUCTURAL FASTENERS TO BE HOT DP GALVANIZED G8.8
2. ALL BOLTS SHALL BE INSTALLED WITH A WASHER UNDER THE NUT & BOLT HEAD IN ACCORDANCE WITH EN 1090-1:3
3. HOLDING DOWN BOLTS BY OTHERS
4. TO ACCOUNT FOR FASTENERS & WELDING, ADD 5% TO OVERALL MASS OF EACH PART FOR INSTALLATION & TRANSPORT PURPOSES



ISOMETRIC VIEW - PRIMARY FEED CONV.  
SCALE 1:100

REV	DESCRIPTION	STATUS	BY	DATE	REF. DRG No.	DESCRIPTION
A	ISSUED FOR APPROVAL	RFC	VR	24.04.2016		
0	ISSUED FOR FABRICATION	RFC	VR	24.04.2016		

**GENERAL NOTES (U.O.N)**

1. THIS DRAWING TO BE READ IN CONJUNCTION WITH RELEVANT ASSEMBLY DRAWINGS.

2. DIMENSIONS - MILLIMETRES (METRIC)

3. HOLES - 220 FOR M20 OF 8.8 BOLTS

4. WELDES - BRONZE FILLET CONT

5. MATERIAL - GRADE S355JR

6. NOTCHES - CORNER RADIUS 11mm (MIN)

7. PAINTING - REFER ENGINEERS SPECIFICATION

**VSE VAN STADEN ENGINEERING**

8 Moleculê Road  
Vulcania  
Brixton

Tel: +27 11 813 1304  
Fax: +27 11 817 3144  
www.vanstadeneng.co.za

**mondo cane**

e: info@mondocane.co.za  
t: +27 21 852-2447 / +27 21 852-2550  
www.mondocane.co.za

Project: **GUINEA ALUMINA EXPORT PROJECT - PHASE 2**

Client: **BAUXITE SIZING STATION  
PRIMARY TRANSFER CONVEYOR  
ISOMETRIC VIEW**

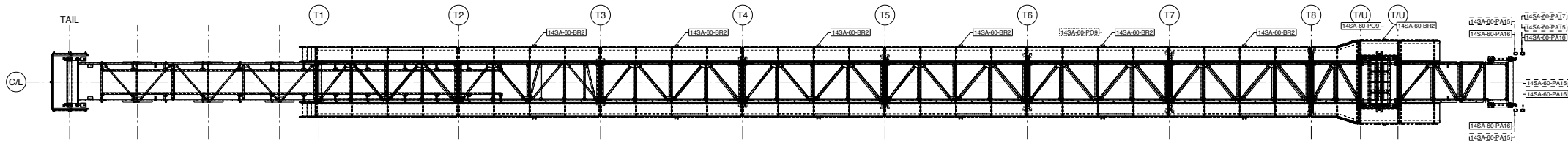
Model: CM  
Date: 24.04.2016  
Scale: 1:100  
Sheet: A1 of 1  
Drawing No: 24SA-GBE01-060000

Approved: [Signature]  
Status: RFC

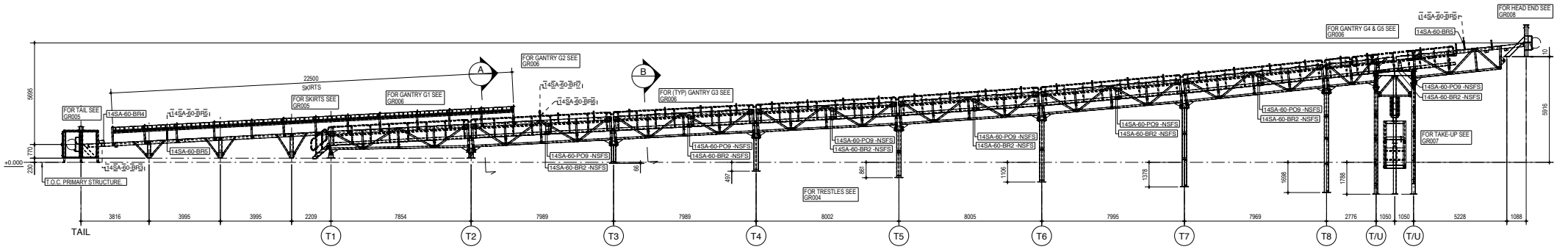
Drawn: [Signature]  
Date: 24.04.2016  
Scale: 1:100  
Sheet: A1 of 1  
Drawing No: 2465-24SA-60-GR002

**GENERAL NOTES (U.O.N):**

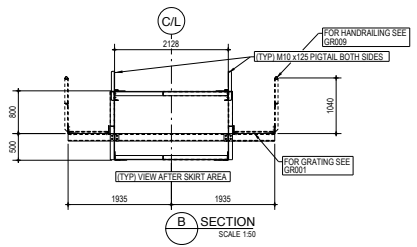
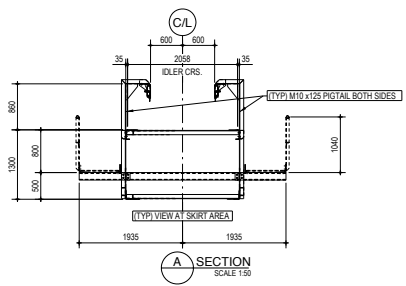
1. ALL STRUCTURAL FASTENERS TO BE HOT DIP GALVANIZED G 8.8
2. ALL BOLTS SHALL BE INSTALLED WITH A WASHER UNDER THE NUT & BOLT HEAD IN ACCORDANCE WITH BS EN 1033 1 & 3
3. BOLTS SHOWN AS G 8.8 SHALL BE TIGHTENED TO SAUC TIGHT CONDITION
4. HOLDING DOWN BOLTS BY OTHERS
5. TO ACCOUNT FOR FASTENERS & WELDING, ADD 5% TO OVERALL MASS OF EACH PART FOR INSTALLATION & TRANSPORT PURPOSES



PLAN ON PRIMARY TRANSFER CONVEYOR  
SCALE 1:110



ELEVATION ON PRIMARY TRANSFER CONVEYOR  
SCALE 1:110



REV	DESCRIPTION	STATUS	BY	DATE	REF. DRG No.	DESCRIPTION
A	ISSUED FOR APPROVAL	RFC	VR	24.04.2018		
0	ISSUED FOR FABRICATION	RFC	VR	24.04.2018		

**GENERAL NOTES (U.O.N)**

1. THIS DRAWING TO BE READ IN CONJUNCTION WITH RELEVANT ASSEMBLY DRAWINGS.
2. DIMENSIONS - MILLIMETRES (METRIC)
3. HOLES - 220 FOR M20 Gf. 8.8 BOLTS
4. WELDS - BRINE FILET CONT.
5. MATERIAL - GRADE S355JR
6. NOTCHES - CORNER RADIUS 11mm (MIN)
7. PAINTING - REFER ENGINEERS SPECIFICATION

**VSE**  
VAN STADEN  
ENGINEERING

8 Moleculer Road  
Vulcania  
Brisbane

Tel: +27 11 813 1304  
Fax: +27 11 817 3144  
www.vanstadeneeng.co.za

**mondo cane**

Project: GUINEA ALUMINA EXPORT PROJECT - PHASE 1

245A-GBE01-060000

**IMD Mining Machinery Developments Limited**  
Registered Office: 81-1, Nairn Drive, Longmeadow, Durban, KwaZulu-Natal

Project: BAUXITE SIZING STATION  
PRIMARY TRANSFER CONVEYOR  
ELEVATION VIEW

Modified: VR  
Date: 14.05.2018  
Scale: 1:50, 1:110  
Drawn: RFC

Approved: VR  
Date: 14.05.2018  
Scale: 1:50, 1:110  
Drawn: RFC

Doc No: 2465-24SA-60-GR003